

Product Name: Glucose Transporter GLUT4 Rabbit Polyclonal Antibody
Catalog #: APRab03401

Summary

Production Name	Glucose Transporter GLUT4 Rabbit Polyclonal Antibody
Description	Primary antibody
Host	Rabbit
Application	WB,IHC-P,ELISA
Reactivity	Human,Mouse,Rat

Performance

Conjugation	Unconjugated
Modification	Unmodified
Isotype	IgG
Clonality	Polyclonal Antibody
Form	Liquid
Storage	Store at 4°C short term. Aliquot and store at -20°C long term. Avoid freeze/thaw cycles.
Buffer	Liquid in PBS containing 50% glycerol, 0.5% BSA and 0.02% sodium azide, pH 7.3.
Purification	Affinity Purified

Immunogen

Gene Name	SLC2A4
Alternative Names	SLC2A4; GLUT4; Solute carrier family 2; facilitated glucose transporter member 4; Glucose transporter type 4; insulin-responsive; GLUT-4
Gene ID	6517
SwissProt ID	P14672

Application

Dilution Ratio	WB: 1/500-1/1000 IHC: 1/50-1/100 ELISA: 1/10000
Molecular Weight	Calculated MW: 55 kDa; Observed MW: 55 kDa

**Product Name: Glucose Transporter GLUT4 Rabbit
Polyclonal Antibody
Catalog #: APRab03401**

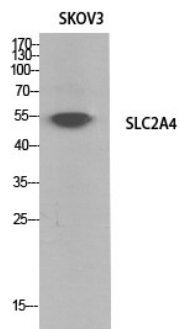
Background

This gene is a member of the solute carrier family 2 (facilitated glucose transporter) family and encodes a protein that functions as an insulin-regulated facilitative glucose transporter. In the absence of insulin, this integral membrane protein is sequestered within the cells of muscle and adipose tissue. Within minutes of insulin stimulation, the protein moves to the cell surface and begins to transport glucose across the cell membrane. Mutations in this gene have been associated with noninsulin-dependent diabetes mellitus (NIDDM).

Research Area

Signal Transduction

Image Data



Western blot analysis of Glucose Transporter GLUT4 in SKOV-3 lysates using Glucose Transporter GLUT4 antibody.

Note

For research use only.