

**Product Name: RhoA Rabbit Polyclonal Antibody**  
**Catalog #: APRab03398**



## Summary

<b>Production Name</b>	RhoA Rabbit Polyclonal Antibody
<b>Description</b>	Primary antibody
<b>Host</b>	Rabbit
<b>Application</b>	WB,IHC-F,IHC-P,ICC/IF,ELISA
<b>Reactivity</b>	Human,Mouse,Rat

## Performance

<b>Conjugation</b>	Unconjugated
<b>Modification</b>	Unmodified
<b>Isotype</b>	IgG
<b>Clonality</b>	Polyclonal Antibody
<b>Form</b>	Liquid
<b>Storage</b>	Store at 4°C short term. Aliquot and store at -20°C long term. Avoid freeze/thaw cycles.
<b>Buffer</b>	Liquid in PBS containing 50% glycerol, 0.5% BSA and 0.02% sodium azide, pH 7.3.
<b>Purification</b>	Affinity Purified

## Immunogen

<b>Gene Name</b>	RHOA
<b>Alternative Names</b>	RHOA; ARH12; ARHA; RHO12; Transforming protein RhoA; Rho cDNA clone 12; h12
<b>Gene ID</b>	387
<b>SwissProt ID</b>	P61586

## Application

<b>Dilution Ratio</b>	WB: 1/500-1/1000 IHC: 1/50-1/100 IF: 1/50-1/200 ELISA: 1/10000
<b>Molecular Weight</b>	Calculated MW: 22 kDa; Observed MW: 22 kDa

## Background

Rho A is a small G protein of the Rho family. Regulates a signal transduction pathway linking plasma membrane receptors

**Product Name: RhoA Rabbit Polyclonal Antibody**  
**Catalog #: APRab03398**

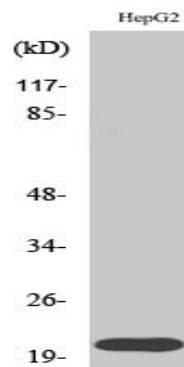


to the assembly of focal adhesions and actin stress fibers.

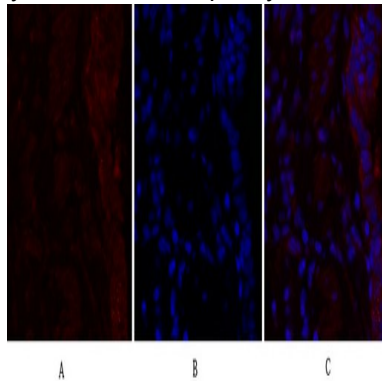
## Research Area

Signal Transduction

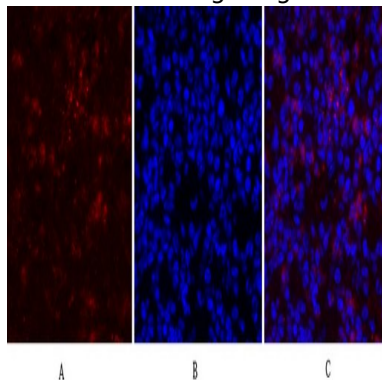
## Image Data



Western blot analysis of RhoA in HepG2 lysates using RhoA antibody.

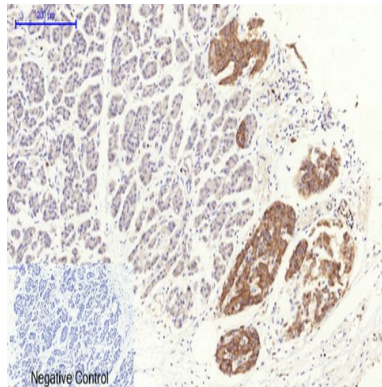


Immunofluorescence analysis of RhoA in rat lung using Rho A antibody (red), and DAPI (blue).



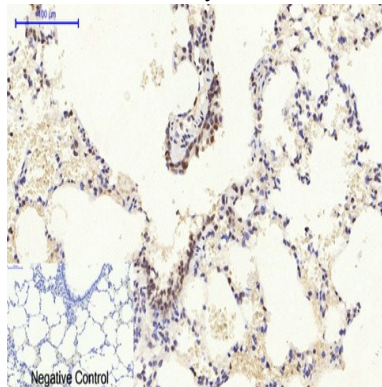
Immunofluorescence analysis of RhoA in mouse lung using Rho A antibody (red), and DAPI (blue)

**Product Name: RhoA Rabbit Polyclonal Antibody**  
**Catalog #: APRab03398**

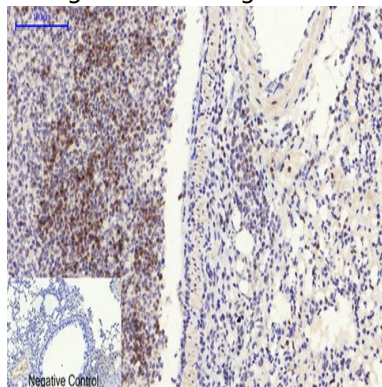


Immunohistochemistry analysis of paraffin-embedded Human stomach cancer tissue using Rho A antibody. High-pressure and temperature Sodium Citrate pH 6.0 was used for antigen retrieval. Negative control was used by secondary antibody

only.



Immunohistochemistry analysis of paraffin-embedded rat lung tissue using RhoA antibody. High-pressure and temperature Sodium Citrate pH 6.0 was used for antigen retrieval. Negative control was used by secondary antibody.



Immunohistochemistry analysis of paraffin-embedded mouse lung tissue using Rho A antibody. High-pressure and temperature Sodium Citrate pH 6.0 was used for antigen retrieval. Negative control was used by secondary antibody only.

## Note

For research use only.