

Product Name: Cleaved-Caspase 1 Rabbit Polyclonal Antibody
Catalog #: APRab03387



Summary

Production Name	Cleaved-Caspase 1 Rabbit Polyclonal Antibody
Description	Primary antibody
Host	Rabbit
Application	WB,IHC-F,IHC-P,ICC/IF,ELISA
Reactivity	Human,Mouse

Performance

Conjugation	Unconjugated
Modification	Cleaved
Isotype	IgG
Clonality	Polyclonal Antibody
Form	Liquid
Storage	Store at 4°C short term. Aliquot and store at -20°C long term. Avoid freeze/thaw cycles.
Buffer	Liquid in PBS containing 50% glycerol, 0.5% BSA and 0.02% sodium azide, pH 7.3.
Purification	Affinity Purified

Immunogen

Gene Name	CASP1
Alternative Names	CASP1; IL1BC; IL1BCE; Caspase-1; CASP-1; Interleukin-1 beta convertase; IL-1BC; Interleukin-1 beta-converting enzyme; ICE; IL-1 beta-converting enzyme; p45
Gene ID	834
SwissProt ID	P29466

Application

Dilution Ratio	WB: 1/500-1/1000 IHC: 1/50-1/100 IF: 1/50-1/200 ELISA: 1/10000
Molecular Weight	Calculated MW: 45 kDa; Observed MW: 25 kDa

Product Name: Cleaved-Caspase 1 Rabbit Polyclonal Antibody
Catalog #: APRab03387



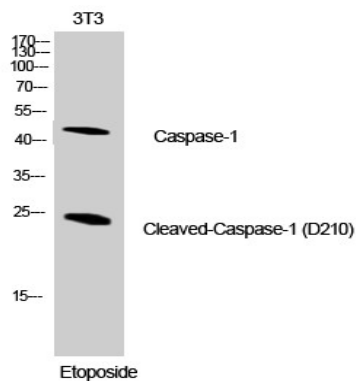
Background

Thiol protease that cleaves IL-1 beta between an Asp and an Ala, releasing the mature cytokine which is involved in a variety of inflammatory processes. Important for defense against pathogens. Cleaves and activates sterol regulatory element binding proteins (SREBPs). Can also promote apoptosis.

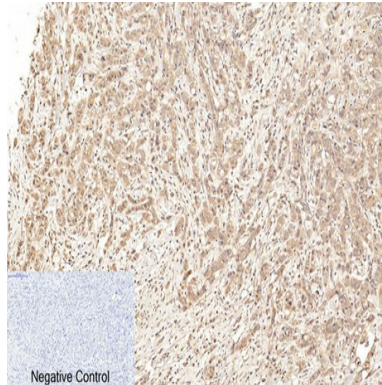
Research Area

Cell Biology

Image Data



Western blot analysis of Cleaved-Caspase 1 in NIH3T3 lysates using Cleaved-Caspase 1 antibody.



Immunohistochemical analysis of paraffin-embedded Human breast cancer using Cleaved-Caspase-1 antibody. High-pressure and temperature Sodium citrate pH 6.0 was used for antigen retrieval.

Note

For research use only.