

Summary

Production Name	SDF1 Rabbit Polyclonal Antibody
Description	Primary antibody
Host	Rabbit
Application	WB,IHC-F,IHC-P,ICC/IF,ELISA
Reactivity	Human,Mouse,Rat

Performance

Conjugation	Unconjugated
Modification	Unmodified
Isotype	IgG
Clonality	Polyclonal Antibody
Form	Liquid
Storage	Store at 4°C short term. Aliquot and store at -20°C long term. Avoid freeze/thaw cycles.
Buffer	Liquid in PBS containing 50% glycerol, 0.5% BSA and 0.02% sodium azide, pH 7.3.
Purification	Affinity Purified

Immunogen

Gene Name	CXCL12 CXCL12; SDF1; SDF1A; SDF1B; Stromal cell-derived factor 1; SDF-1; hSDF-1; C-X-C motif
Alternative Names	chemokine 12; Intercrine reduced in hepatomas; IRH; hIRH; Pre-B cell growth-stimulating factor; PBSF
Gene ID	6387
SwissProt ID	P48061

Application

Dilution Ratio	WB: 1/500-1/1000 IHC: 1/50-1/100 IF: 1/50-1/200 ELISA: 1/10000
Molecular Weight	Calculated MW: 11 kDa; Observed MW: 11 kDa

Product Name: SDF1 Rabbit Polyclonal Antibody
Catalog #: APRab03385



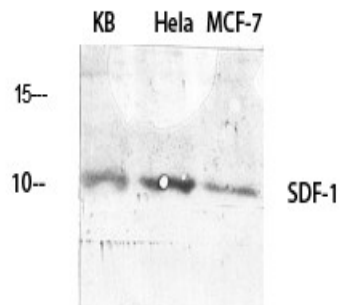
Background

Chemoattractant active on T-lymphocytes, monocytes, but not neutrophils. Activates the C-X-C chemokine receptor CXCR4 to induce a rapid and transient rise in the level of intracellular calcium ions and chemotaxis. Also binds to atypical chemokine receptor ACKR3, which activates the beta-arrestin pathway and acts as a scavenger receptor for SDF-1.

Research Area

Immunology

Image Data



Western blot analysis of SDF1 in various lysates using SDF1 antibody.

Note

For research use only.