

Product Name: Rb Rabbit Polyclonal Antibody
Catalog #: APRab03384

Summary

Production Name	Rb Rabbit Polyclonal Antibody
Description	Primary antibody
Host	Rabbit
Application	WB,IHC-F,IHC-P,ICC/IF,ELISA
Reactivity	Human,Mouse,Rat

Performance

Conjugation	Unconjugated
Modification	Unmodified
Isotype	IgG
Clonality	Polyclonal Antibody
Form	Liquid
Storage	Store at 4°C short term. Aliquot and store at -20°C long term. Avoid freeze/thaw cycles.
Buffer	Liquid in PBS containing 50% glycerol, 0.5% BSA and 0.02% sodium azide, pH 7.3.
Purification	Affinity Purified

Immunogen

Gene Name	RB1
Alternative Names	RB1; Retinoblastoma-associated protein; p105-Rb; pRb; Rb; pp110
Gene ID	5925
SwissProt ID	P06400

Application

Dilution Ratio	WB: 1/500-1/1000 IHC: 1/50-1/100 IF: 1/50-1/200 ELISA: 1/10000
Molecular Weight	Calculated MW: 106 kDa; Observed MW: 106 kDa

Background

Cell cycle-dependent phosphorylation by a CDK inhibits Rb target binding and allows cell cycle progression. Rb inactivation

Product Name: Rb Rabbit Polyclonal Antibody
Catalog #: APRab03384

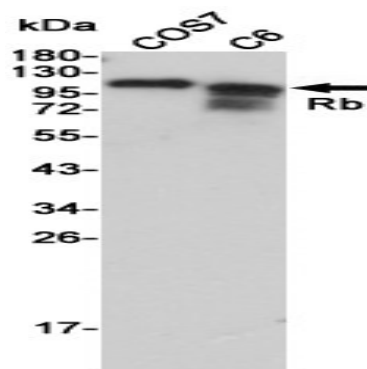


and subsequent cell cycle progression likely requires an initial phosphorylation by cyclin D-CDK4/6 followed by cyclin E-CDK2 phosphorylation. Specificity of different CDK/cyclin complexes has been observed in vitro and cyclin D1 is required for Ser780 phosphorylation in vivo.

Research Area

Cell Biology

Image Data



Western blot analysis of Rb in COS7 and C6 lysates using Rb antibody.

Note

For research use only.