

**Product Name: Phospho-CREB (Ser133) Rabbit
Polyclonal Antibody
Catalog #: APRab03380**

Summary

Production Name	Phospho-CREB (Ser133) Rabbit Polyclonal Antibody
Description	Primary antibody
Host	Rabbit
Application	WB,IHC-F,IHC-P,ICC/IF,IP,ELISA
Reactivity	Human,Mouse,Rat

Performance

Conjugation	Unconjugated
Modification	Phosphorylated
Isotype	IgG
Clonality	Polyclonal Antibody
Form	Liquid
Storage	Store at 4°C short term. Aliquot and store at -20°C long term. Avoid freeze/thaw cycles.
Buffer	Liquid in PBS containing 50% glycerol, 0.5% BSA and 0.02% sodium azide, pH 7.3.
Purification	Affinity Purified

Immunogen

Gene Name	CREB1
Alternative Names	CREB1; Cyclic AMP-responsive element-binding protein 1; CREB-1; cAMP-responsive element-binding protein 1
Gene ID	1385
SwissProt ID	P16220

Application

Dilution Ratio	WB: 1/500-1/1000 IHC: 1/50-1/100 IF: 1/50-1/200 IP: 1/20 ELISA: 1/10000
Molecular Weight	Calculated MW: 35 kDa; Observed MW: 35 kDa

Product Name: Phospho-CREB (Ser133) Rabbit Polyclonal Antibody
Catalog #: APRab03380

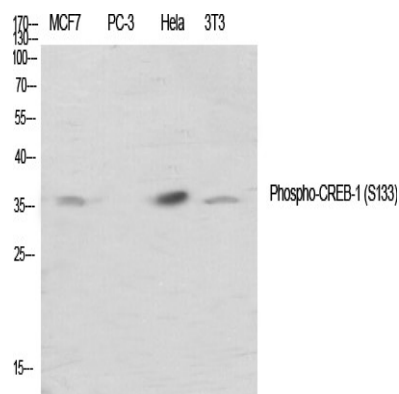
Background

This gene encodes a transcription factor that is a member of the leucine zipper family of DNA binding proteins. This protein binds as a homodimer to the cAMP-responsive element, an octameric palindrome.

Research Area

Epigenetics and Nuclear Signaling

Image Data



Western blot analysis of Phospho-CREB (Ser133) in various lysates using Phospho-CREB (Ser133) antibody.

Note

For research use only.