

Product Name: Mitofusin 2 Rabbit Polyclonal Antibody
Catalog #: APRab03377



Summary

Production Name	Mitofusin 2 Rabbit Polyclonal Antibody
Description	Primary antibody
Host	Rabbit
Application	WB,IHC-P,ELISA
Reactivity	Human,Mouse,Rat

Performance

Conjugation	Unconjugated
Modification	Unmodified
Isotype	IgG
Clonality	Polyclonal Antibody
Form	Liquid
Storage	Store at 4°C short term. Aliquot and store at -20°C long term. Avoid freeze/thaw cycles.
Buffer	Liquid in PBS containing 50% glycerol, 0.5% BSA and 0.02% sodium azide, pH 7.3.
Purification	Affinity Chromatography

Immunogen

Gene Name	MFN2
Alternative Names	MFN2,CPRP1, KIAA0214,Mitofusin-2,Transmembrane GTPase MFN2
Gene ID	9927
SwissProt ID	O95140

Application

Dilution Ratio	WB: 1/500-1/1000 IHC: 1/50-1/100 ELISA: 1/10000
Molecular Weight	Calculated MW: 86 kDa; Observed MW: 86 kDa

Background

Plays an important role in the regulation of vascular smooth muscle cell proliferation. Involved in the clearance of damaged

Product Name: Mitofusin 2 Rabbit Polyclonal Antibody
Catalog #: APRab03377

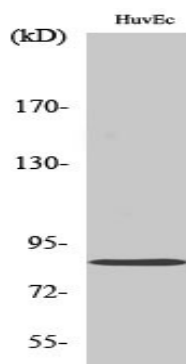


mitochondria via selective autophagy (mitophagy). Is required for PARK2 recruitment to dysfunctional mitochondria.

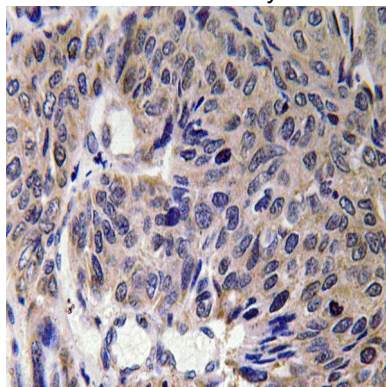
Research Area

Tags & Cell Markers

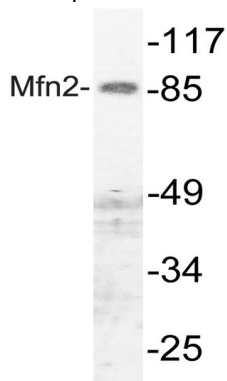
Image Data



Western blot analysis of Mitofusin 2 in various lysates using Mitofusin 2 antibody.



Immunohistochemistry analysis of paraffin-embedded Human lung carcinoma tissue using Mitofusin 2 antibody. High-pressure and temperature Sodium Citrate pH 6.0 was used for antigen retrieval.



Western blot analysis of Mitofusin 2 in HUVEC lysates using Mfn2 antibody.

Product Name: Mitofusin 2 Rabbit Polyclonal Antibody
Catalog #: APRab03377



Note

For research use only.