

Product Name: VEGF Receptor 2 Rabbit Polyclonal Antibody
Catalog #: APRab03373

Summary

Production Name	VEGF Receptor 2 Rabbit Polyclonal Antibody
Description	Primary antibody
Host	Rabbit
Application	WB,IHC-F,IHC-P,ICC/IF,ELISA
Reactivity	Human,Mouse

Performance

Conjugation	Unconjugated
Modification	Unmodified
Isotype	IgG
Clonality	Polyclonal Antibody
Form	Liquid
Storage	Store at 4°C short term. Aliquot and store at -20°C long term. Avoid freeze/thaw cycles.
Buffer	Liquid in PBS containing 50% glycerol, 0.5% BSA and 0.02% sodium azide, pH 7.3.
Purification	Affinity Purified

Immunogen

Gene Name	KDR KDR; FLK1; VEGFR2; Vascular endothelial growth factor receptor 2; VEGFR-2; Fetal liver
Alternative Names	kinase 1; FLK-1; Kinase insert domain receptor; KDR; Protein-tyrosine kinase receptor flk-1; CD antigen CD309
Gene ID	3791
SwissProt ID	P35968

Application

Dilution Ratio	WB: 1/500-1/1000 IHC: 1/50-1/100 IF: 1/50-1/200 ELISA: 1/10000
Molecular Weight	Calculated MW: 152 kDa; Observed MW: 210,230 kDa

Product Name: VEGF Receptor 2 Rabbit Polyclonal Antibody
Catalog #: APRab03373

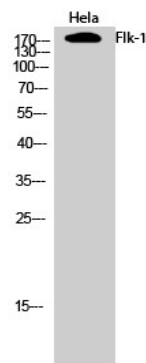
Background

VEGFR-2 is a receptor tyrosine kinase of the VEGFR family. High affinity receptor for VEGF and VEGF-C. Ligand binding induces autophosphorylation and activation. Activated receptor recruits proteins including Shc, GRB2, PI3K, Nck, SHP-1 and SHP-2.

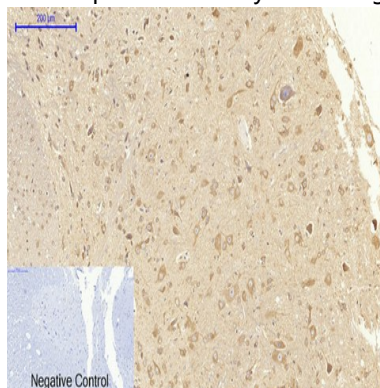
Research Area

Epigenetics and Nuclear Signaling

Image Data

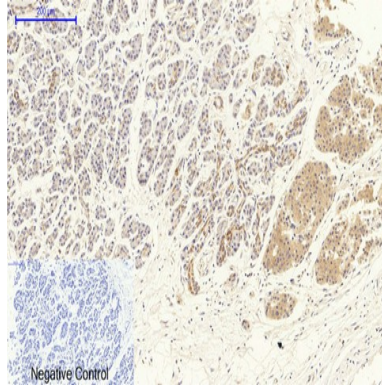


Western blot analysis of VEGF Receptor 2 in HeLa lysates using VEGF Receptor 2 antibody.

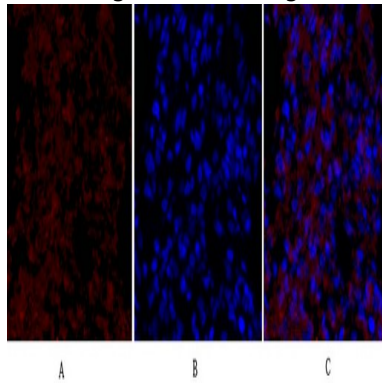


Immunohistochemistry analysis of paraffin-embedded rat spinal cord using Flk1 antibody. High-pressure and temperature Sodium Citrate pH 6.0 was used for antigen retrieval. Sample with blocking peptide on the right.

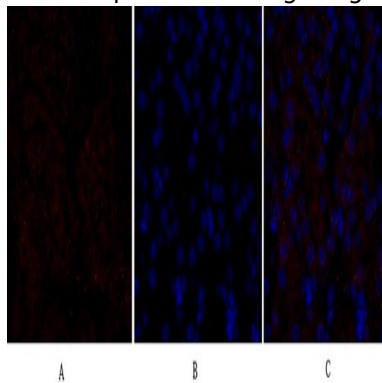
Product Name: VEGF Receptor 2 Rabbit Polyclonal Antibody
Catalog #: APRab03373



Immunohistochemistry analysis of paraffin-embedded Human stomach cancer using Flk1 antibody. High-pressure and temperature Sodium Citrate pH 6.0 was used for antigen retrieval. Negative control was used by secondary antibody only.



Immunofluorescence analysis of VEGF Receptor 2 in rat lung using Flk1 antibody (red), and DAPI (blue).



Immunofluorescence analysis of VEGF Receptor 2 in mouse kidney using VEGF Receptor 2 antibody (red), and DAPI (blue).

Note

For research use only.