

## Summary

<b>Production Name</b>	ER beta Rabbit Polyclonal Antibody
<b>Description</b>	Primary antibody
<b>Host</b>	Rabbit
<b>Application</b>	WB,IHC-F,IHC-P,ICC/IF,ELISA
<b>Reactivity</b>	Human,Mouse,Rat

## Performance

<b>Conjugation</b>	Unconjugated
<b>Modification</b>	Unmodified
<b>Isotype</b>	IgG
<b>Clonality</b>	Polyclonal Antibody
<b>Form</b>	Liquid
<b>Storage</b>	Store at 4°C short term. Aliquot and store at -20°C long term. Avoid freeze/thaw cycles.
<b>Buffer</b>	Liquid in PBS containing 50% glycerol, 0.5% BSA and 0.02% sodium azide, pH 7.3.
<b>Purification</b>	Affinity Purified

## Immunogen

<b>Gene Name</b>	ESR2
<b>Alternative Names</b>	ESR2; ESTRB; NR3A2; Estrogen receptor beta; ER-beta; Nuclear receptor subfamily 3 group A member 2
<b>Gene ID</b>	2100
<b>SwissProt ID</b>	Q92731

## Application

<b>Dilution Ratio</b>	WB: 1/500-1/1000 IHC: 1/50-1/100 IF: 1/50-1/200 ELISA: 1/10000
<b>Molecular Weight</b>	Calculated MW: 59 kDa; Observed MW: 59 kDa

## Background

**Product Name: ER beta Rabbit Polyclonal Antibody**  
**Catalog #: APRab03372**

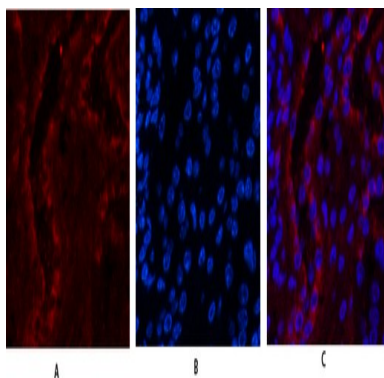


Nuclear hormone receptor. Binds estrogens with an affinity similar to that of ESR1, and activates expression of reporter genes containing estrogen response elements (ERE) in an estrogen-dependent manner (PubMed:20074560).

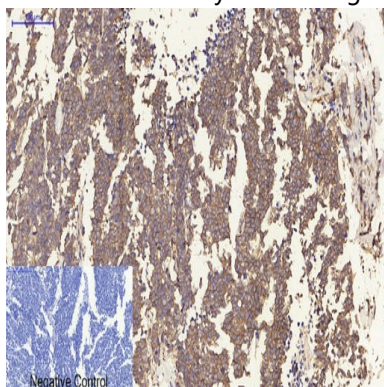
## Research Area

Epigenetics and Nuclear Signaling

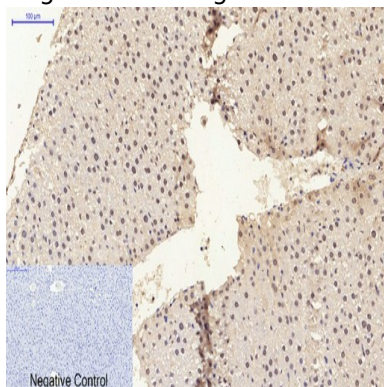
## Image Data



Immunofluorescence analysis of ER beta in mouse kidney tissue using ER beta antibody(red),and DAPI (blue).



Immunohistochemical analysis of paraffin-embedded Human tonsils using ER beta antibody.High-pressure and temperature Sodium Citrate pH 6.0 was used for antigen retrieval.Negative control was used by secondary antibody only.

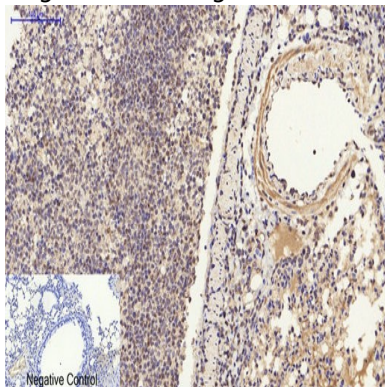


Immunohistochemistry analysis of paraffin-embedded rat liver tissue using ER $\beta$  antibody. High-pressure and temperature

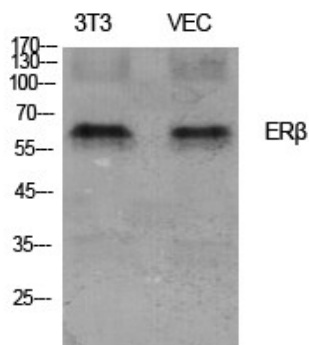
**Product Name: ER beta Rabbit Polyclonal Antibody**  
**Catalog #: APRab03372**



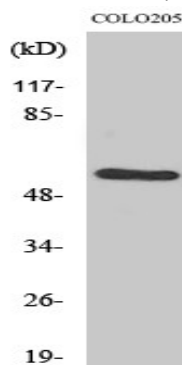
Sodium Citrate pH 6.0 was used for antigen retrieval. Negative control was used by secondary antibody only.



Immunohistochemistry analysis of paraffin-embedded mouse lung tissue using ER $\beta$  antibody. High-pressure and temperature Sodium Citrate pH 6.0 was used for antigen retrieval. Negative control was used by secondary antibody only.



Western blot analysis of ER beta in 3T3, VEC lysates using ER $\beta$  antibody.



Western blot analysis of ER beta in COLO205 lysates using ER $\beta$  antibody

## Note

For research use only.