

Summary

Production Name	DRP1 Rabbit Polyclonal Antibody
Description	Primary antibody
Host	Rabbit
Application	WB,IHC-P
Reactivity	Human,Mouse,Rat

Performance

Conjugation	Unconjugated
Modification	Unmodified
Isotype	IgG
Clonality	Polyclonal Antibody
Form	Liquid
Storage	Store at 4°C short term. Aliquot and store at -20°C long term. Avoid freeze/thaw cycles.
Buffer	Liquid in PBS containing 50% glycerol, 0.5% BSA and 0.02% sodium azide, pH 7.3.
Purification	Affinity Purified

Immunogen

Gene Name	DNM1L
Alternative Names	DNM1L; DLP1; DRP1; Dynamin-1-like protein; Dnm1p/Vps1p-like protein; DVLP; Dynamin family member proline-rich carboxyl-terminal domain less; Dymple; Dynamin-like protein; Dynamin-like protein 4; Dynamin-like protein IV; HdynIV; Dynamin-rela
Gene ID	10059
SwissProt ID	O00429

Application

Dilution Ratio	WB: 1/500-1/1000 IHC: 1/50-1/100
Molecular Weight	Calculated MW: 82 kDa; Observed MW: 82 kDa

Product Name: DRP1 Rabbit Polyclonal Antibody
Catalog #: APRab03371



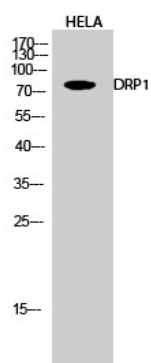
Background

The protein encoded by this gene is a member of the dynamin superfamily of GTPases. Members of the dynamin-related subfamily, including the *S. cerevisiae* proteins Dnm1 and Vps1, contain the N-terminal tripartite GTPase domain but do not have the pleckstrin homology or proline-rich domains. This protein establishes mitochondrial morphology through a role in distributing mitochondrial tubules throughout the cytoplasm. The gene has 3 alternatively spliced transcripts encoding different isoforms. These transcripts are alternatively polyadenylated.

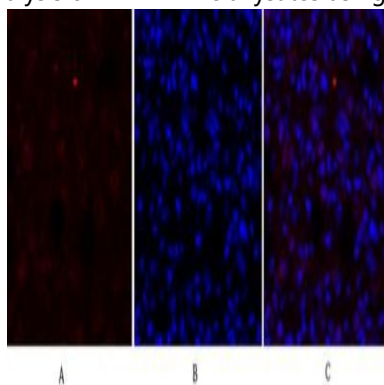
Research Area

Neuroscience

Image Data

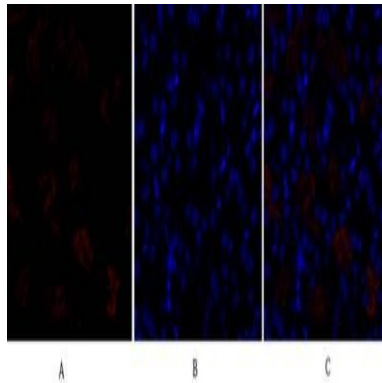


Western blot analysis of DRP1 in HeLa lysates using DRP1 antibody.

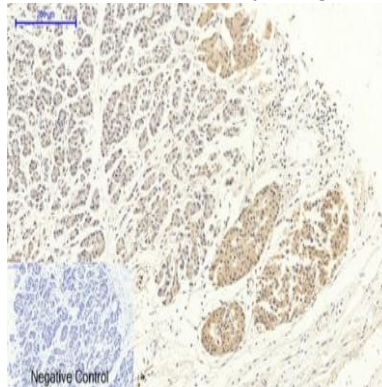


Immunofluorescence analysis of DRP1 in rat lung using DRP1 antibody (red), and DAPI (blue).

Product Name: DRP1 Rabbit Polyclonal Antibody
Catalog #: APRab03371



Immunofluorescence analysis of DRP1 in mouse kidney using DRP1 antibody(red),and DAPI (blue)



Immunohistochemistry analysis of paraffin-embedded Human stomach cancer using DRP1 antibody.High-pressure and temperature Sodium Citrate pH 6.0 was used for antigen retrieval. Negative control was used by secondary antibody only.

Note

For research use only.