

Summary

Production Name	Cyclin B1 Rabbit Polyclonal Antibody
Description	Primary antibody
Host	Rabbit
Application	WB,IHC-F,IHC-P,ICC/IF,ELISA
Reactivity	Human,Mouse,Rat

Performance

Conjugation	Unconjugated
Modification	Unmodified
Isotype	IgG
Clonality	Polyclonal Antibody
Form	Liquid
Storage	Store at 4°C short term. Aliquot and store at -20°C long term. Avoid freeze/thaw cycles.
Buffer	Liquid in PBS containing 50% glycerol, 0.5% BSA and 0.02% sodium azide, pH 7.3.
Purification	Affinity Purified

Immunogen

Gene Name	CCNB1
Alternative Names	CCNB1; CCNB; G2/mitotic-specific cyclin-B1
Gene ID	891
SwissProt ID	P14635

Application

Dilution Ratio	WB: 1/500-1/1000 IHC: 1/50-1/100 IF: 1/50-1/200 ELISA: 1/10000
Molecular Weight	Calculated MW: 48 kDa; Observed MW: 60 kDa

Background

Essential for the control of the cell cycle at the G2/M (mitosis) transition. a member of the highly conserved cyclin family,

Product Name: Cyclin B1 Rabbit Polyclonal Antibody
Catalog #: APRab03370

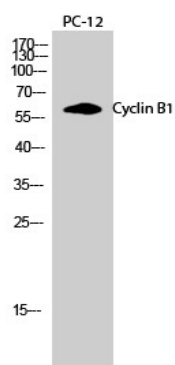


whose members are characterized by a dramatic periodicity in protein abundance through the cell cycle. Cyclins function as regulators of CDK kinases.

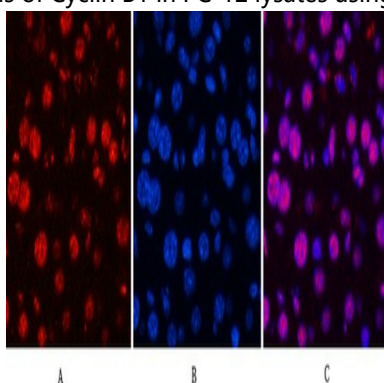
Research Area

Cell Biology

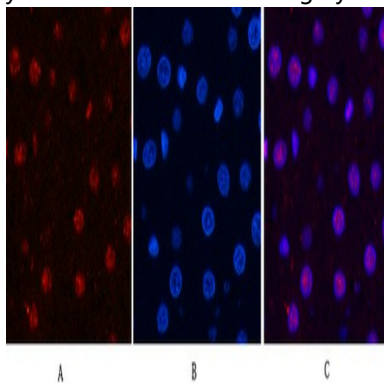
Image Data



Western blot analysis of Cyclin B1 in PC-12 lysates using Cyclin B1 antibody.

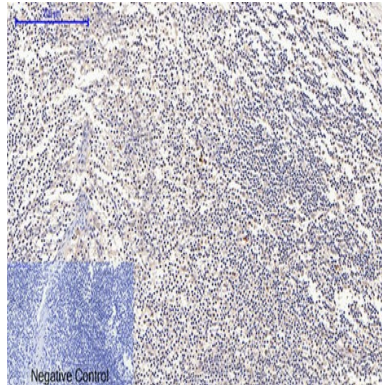


Immunofluorescence analysis of Cyclin B1 in mouse liver using Cyclin B1 antibody(red),and DAPI (blue).



Immunofluorescence analysis of Cyclin B1 in rat liver using Cyclin B1 antibody(red).

Product Name: Cyclin B1 Rabbit Polyclonal Antibody
Catalog #: APRab03370



Immunohistochemistry analysis of paraffin-embedded Human tonsil using Cyclin B1 antibody. High-pressure and temperature Sodium Citrate pH 6.0 was used for antigen retrieval. Negative control was used by secondary antibody only.

Note

For research use only.