

Summary

Production Name	Calnexin Rabbit Polyclonal Antibody
Description	Primary antibody
Host	Rabbit
Application	WB,IHC-F,IHC-P,ICC/IF,ELISA
Reactivity	Human,Mouse,Rat

Performance

Conjugation	Unconjugated
Modification	Unmodified
Isotype	IgG
Clonality	Polyclonal Antibody
Form	Liquid
Storage	Store at 4°C short term. Aliquot and store at -20°C long term. Avoid freeze/thaw cycles.
Buffer	Liquid in PBS containing 50% glycerol, 0.5% BSA and 0.02% sodium azide, pH 7.3.
Purification	Affinity Purified

Immunogen

Gene Name	CANX
Alternative Names	CANX; Calnexin; IP90; Major histocompatibility complex class I antigen-binding protein p88; p90
Gene ID	821
SwissProt ID	P27824

Application

Dilution Ratio	WB: 1/500-1/1000 IHC: 1/50-1/100 IF: 1/50-1/200 ELISA: 1/10000
Molecular Weight	Calculated MW: 68 kDa; Observed MW: 90 kDa

Background

Product Name: Calnexin Rabbit Polyclonal Antibody
Catalog #: APRab03366

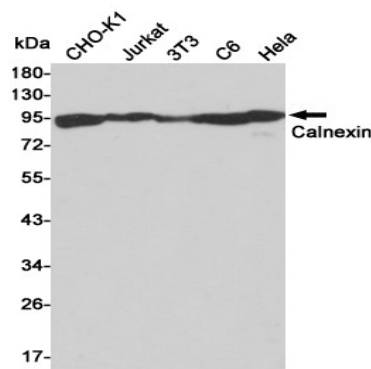


Calnexin is a calcium-binding protein embedded in the ER membrane that retains the newly synthesized glycoproteins inside the ER to ensure proper folding and quality control (3-5). The specificity of calnexin for a subset of glycoproteins is defined by a lectin site, which binds an early oligosaccharide intermediate on the folding glycoprotein.

Research Area

Tags & Cell Markers

Image Data



Western blot analysis of Calnexin in CHO-K1, Jurkat, 3T3, C6 and HeLa lysates using Calnexin antibody.

Note

For research use only.