
Summary

Production Name	LAT Rabbit Polyclonal Antibody
Description	Primary antibody
Host	Rabbit
Application	WB,ELISA
Reactivity	Human,Mouse,Rat

Performance

Conjugation	Unconjugated
Modification	Unmodified
Isotype	IgG
Clonality	Polyclonal Antibody
Form	Liquid
Storage	Store at 4°C short term. Aliquot and store at -20°C long term. Avoid freeze/thaw cycles.
Buffer	Liquid in PBS containing 50% glycerol, 0.5% BSA and 0.02% sodium azide, pH 7.3.
Purification	Affinity Purified

Immunogen

Gene Name	LAT
Alternative Names	LAT; Linker for activation of T-cells family member 1; 36 kDa phospho-tyrosine adapter protein; pp36; p36-38
Gene ID	27040
SwissProt ID	O43561

Application

Dilution Ratio	WB: 1/500-1/1000 ELISA: 1/10000
Molecular Weight	Calculated MW: 28 kDa; Observed MW: 28 kDa

Background

Product Name: LAT Rabbit Polyclonal Antibody
Catalog #: APRab03358

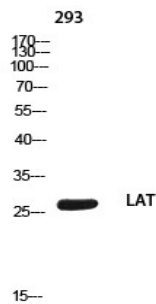


Required for TCR (T-cell antigen receptor)- and pre-TCR-mediated signaling, both in mature T-cells and during their development. Involved in FCGR3 (low affinity immunoglobulin gamma Fc region receptor III)-mediated signaling in natural killer cells and FCER1 (high affinity immunoglobulin epsilon receptor)-mediated signaling in mast cells. Couples activation of these receptors and their associated kinases with distal intracellular events such as mobilization of intracellular calcium stores, PKC activation, MAPK activation or cytoskeletal reorganization through the recruitment of PLCG1, GRB2, GRAP2, and other signaling molecules.

Research Area

Immunology

Image Data



Western blot analysis of LAT in 293 lysates using LAT antibody.

Note

For research use only.