

**Product Name: Phospho-Smad2/3 (Thr8) Rabbit Polyclonal Antibody**  
**Catalog #: APRab03350**

---

## Summary

<b>Production Name</b>	Phospho-Smad2/3 (Thr8) Rabbit Polyclonal Antibody
<b>Description</b>	Primary antibody
<b>Host</b>	Rabbit
<b>Application</b>	WB,ELISA
<b>Reactivity</b>	Human,Mouse,Rat

## Performance

<b>Conjugation</b>	Unconjugated
<b>Modification</b>	Phosphorylated
<b>Isotype</b>	IgG
<b>Clonality</b>	Polyclonal Antibody
<b>Form</b>	Liquid
<b>Storage</b>	Store at 4°C short term. Aliquot and store at -20°C long term. Avoid freeze/thaw cycles.
<b>Buffer</b>	Liquid in PBS containing 50% glycerol, 0.5% BSA and 0.02% sodium azide, pH 7.3.
<b>Purification</b>	Affinity Purified

## Immunogen

<b>Gene Name</b>	SMAD2/SMAD3 SMAD2; MADH2; MADR2; MAD homolog 2; M hMAD-2; SMAD family member 2;
<b>Alternative Names</b>	SMAD 2; Smad2; hSMAD2;SMAD3; MADH3; hMAD-3; JV15-2; SMAD family member 3; SMAD 3; Smad3; hSMAD3;smad2/3;smad2+3
<b>Gene ID</b>	4087/4088
<b>SwissProt ID</b>	Q15796/P84022

## Application

<b>Dilution Ratio</b>	WB: 1/500-1/1000 ELISA: 1/10000
<b>Molecular Weight</b>	Calculated MW: 52 kDa; Observed MW: 48-52, 60 kDa

**Product Name: Phospho-Smad2/3 (Thr8) Rabbit Polyclonal Antibody**  
**Catalog #: APRab03350**

---

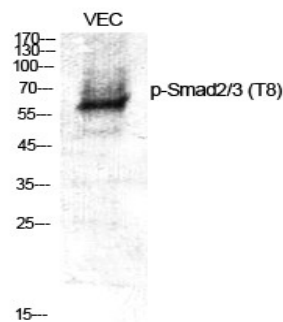
## Background

The protein encoded by this gene belongs to the SMAD, a family of proteins similar to the gene products of the *Drosophila* gene 'mothers against decapentaplegic' (Mad) and the *C. elegans* gene Sma. SMAD proteins are signal transducers and transcriptional modulators that mediate multiple signaling pathways.

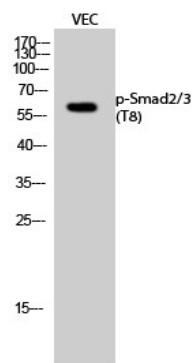
## Research Area

Signal Transduction

## Image Data



Western blot analysis of Phospho-Smad2/3 (Thr8) in various lysates using Phospho-Smad2/3 (Thr8) antibody.



Western blot analysis of Phospho-Smad2/3 (Thr8) in VEC lysates using Phospho-Smad2/3 (T8) antibody.

## Note

For research use only.