

**Product Name: Angiotensin 1 Rabbit Polyclonal Antibody**  
**Catalog #: APRab03349**

---

## Summary

<b>Production Name</b>	Angiotensin 1 Rabbit Polyclonal Antibody
<b>Description</b>	Primary antibody
<b>Host</b>	Rabbit
<b>Application</b>	WB,IHC-P,ELISA
<b>Reactivity</b>	Human,Rat

## Performance

<b>Conjugation</b>	Unconjugated
<b>Modification</b>	Unmodified
<b>Isotype</b>	IgG
<b>Clonality</b>	Polyclonal Antibody
<b>Form</b>	Liquid
<b>Storage</b>	Store at 4°C short term. Aliquot and store at -20°C long term. Avoid freeze/thaw cycles.
<b>Buffer</b>	Liquid in PBS containing 50% glycerol, 0.5% BSA and 0.02% sodium azide, pH 7.3.
<b>Purification</b>	Affinity Purified

## Immunogen

<b>Gene Name</b>	ANGPT1
<b>Alternative Names</b>	ANGPT1; KIAA0003; Angiotensin-1; ANG-1
<b>Gene ID</b>	284
<b>SwissProt ID</b>	Q15389

## Application

<b>Dilution Ratio</b>	WB: 1/500-1/1000 IHC: 1/50-1/100 ELISA: 1/10000
<b>Molecular Weight</b>	Calculated MW: 58 kDa; Observed MW: 58 kDa

## Background

---

**Product Name: Angiopoietin 1 Rabbit Polyclonal Antibody**  
**Catalog #: APRab03349**

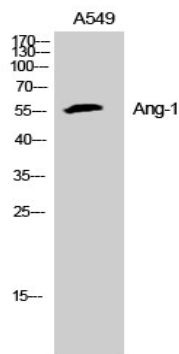
---

Binds and activates TEK/TIE2 receptor by inducing its dimerization and tyrosine phosphorylation. Plays an important role in the regulation of angiogenesis, endothelial cell survival, proliferation, migration, adhesion and cell spreading, reorganization of the actin cytoskeleton, but also maintenance of vascular quiescence. Required for normal angiogenesis and heart development during embryogenesis. After birth, activates or inhibits angiogenesis, depending on the context.

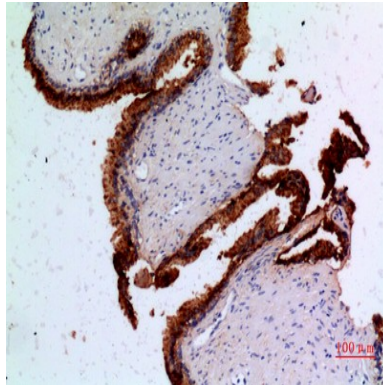
## Research Area

Cancer

## Image Data



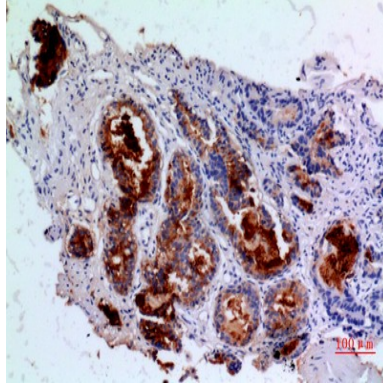
Western blot analysis of Angiopoietin 1 in A549, K562 lysates using Angiopoietin 1 antibody.



Immunohistochemistry analysis of paraffin-embedded Human prostatic cancer using Angiopoietin 1 antibody. High-pressure and temperature Sodium Citrate pH 6.0 was used for antigen retrieval.

**Product Name: Angiopoietin 1 Rabbit Polyclonal  
Antibody**  
**Catalog #: APRab03349**

---



Immunohistochemistry analysis of paraffin-embedded Human prostatic cancer using Angiopoietin 1 antibody. High-pressure and temperature Sodium Citrate pH 6.0 was used for antigen retrieval.

**Note**

For research use only.