

Summary

Production Name	ACTC1 Rabbit Polyclonal Antibody
Description	Primary antibody
Host	Rabbit
Application	WB,IHC-P,ELISA
Reactivity	Human,Mouse,Rat

Performance

Conjugation	Unconjugated
Modification	Unmodified
Isotype	IgG
Clonality	Polyclonal Antibody
Form	Liquid
Storage	Store at 4°C short term. Aliquot and store at -20°C long term. Avoid freeze/thaw cycles.
Buffer	Liquid in PBS containing 50% glycerol, 0.5% BSA and 0.02% sodium azide, pH 7.3.
Purification	Affinity Purified

Immunogen

Gene Name	ACTC1
Alternative Names	ACTC1; ACTC; Actin; alpha cardiac muscle 1; Alpha-cardiac actin; ACTA1; ACTA; Actin; alpha skeletal muscle; Alpha-actin-1; ACTA2; ACTSA; ACTVS; GIG46
Gene ID	70
SwissProt ID	P68032

Application

Dilution Ratio	WB: 1/500-1/1000 IHC: 1/50-1/100 ELISA: 1/10000
Molecular Weight	Calculated MW: 42 kDa; Observed MW: 42 kDa

Background

Product Name: ACTC1 Rabbit Polyclonal Antibody
Catalog #: APRab03346

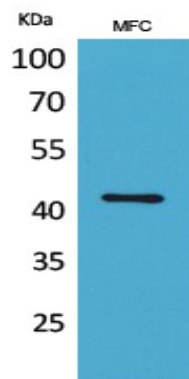


Actins are highly conserved proteins that are involved in various types of cell motility and are ubiquitously expressed in all eukaryotic cells.

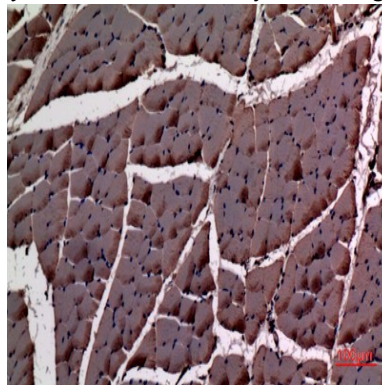
Research Area

Signal Transduction

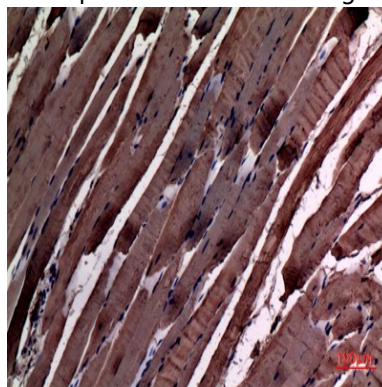
Image Data



Western blot analysis of ACTC1 in MFC lysates using ACTC1 antibody.



Immunohistochemistry analysis of paraffin-embedded rat muscle using ACTC1 antibody. High-pressure and temperature Sodium Citrate pH 6.0 was used for antigen retrieval.

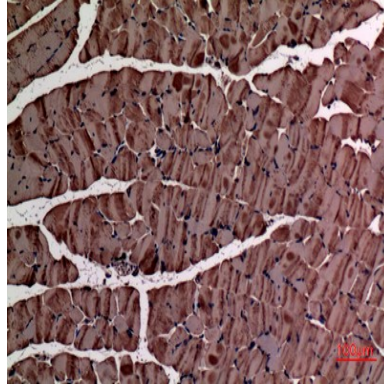


Immunohistochemistry analysis of paraffin-embedded rat muscle using ACTC1 antibody. High-pressure and temperature

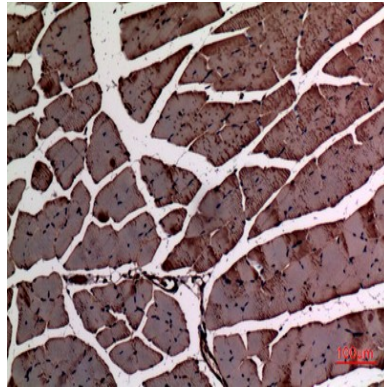
Product Name: ACTC1 Rabbit Polyclonal Antibody
Catalog #: APRab03346



Sodium Citrate pH 6.0 was used for antigen retrieval.



Immunohistochemistry analysis of paraffin-embedded mouse muscle using ACTC1 antibody. High-pressure and temperature Sodium Citrate pH 6.0 was used for antigen retrieval.



Immunohistochemistry analysis of paraffin-embedded mouse muscle using ACTC1 antibody. High-pressure and temperature Sodium Citrate pH 6.0 was used for antigen retrieval.

Note

For research use only.