

## Summary

<b>Production Name</b>	Plastin L Rabbit Polyclonal Antibody
<b>Description</b>	Primary antibody
<b>Host</b>	Rabbit
<b>Application</b>	WB,IHC-F,IHC-P,ICC/IF,FC,IP
<b>Reactivity</b>	Human

## Performance

<b>Conjugation</b>	Unconjugated
<b>Modification</b>	Unmodified
<b>Isotype</b>	IgG
<b>Clonality</b>	Polyclonal Antibody
<b>Form</b>	Liquid
<b>Storage</b>	Store at 4°C short term. Aliquot and store at -20°C long term. Avoid freeze/thaw cycles.
<b>Buffer</b>	50mM Tris-Glycine(pH 7.4), 0.15M NaCl, 40% Glycerol, 0.01% Sodium azide and 0.05% BSA
<b>Purification</b>	Affinity Purified

## Immunogen

<b>Gene Name</b>	LCP1
<b>Alternative Names</b>	CP64; L plastin; LC64P; LCP1; LPL; Lplastin; Plastin 2; PLS2
<b>Gene ID</b>	3936
<b>SwissProt ID</b>	P13796

## Application

<b>Dilution Ratio</b>	WB: 1/500-1/1000 IHC: 1/50-1/100 IF: 1/50-1/200 IP: 1/20 FC: 1/50-1/100
<b>Molecular Weight</b>	Calculated MW: 70 kDa; Observed MW: 70 kDa

**Product Name: Plastin L Rabbit Polyclonal Antibody**  
**Catalog #: APRab01400**



## Background

Actin-binding protein. Plays a role in the activation of T-cells in response to costimulation through TCR/CD3 and CD2 or CD28. Modulates the cell surface expression of IL2RA/CD25 and CD69.

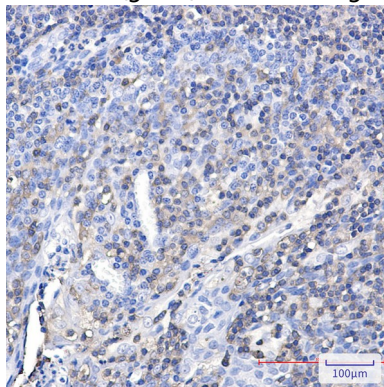
## Research Area

Signal Transduction

## Image Data



Immunocytochemistry analysis of Plastin L (green) in Jurkat using Plastin L antibody, and DAPI (blue).



Immunohistochemistry analysis of paraffin-embedded Human tonsil using Plastin L antibody. High-pressure and temperature Sodium Citrate pH 6.0 was used for antigen retrieval.

## Note

For research use only.