

## Summary

<b>Production Name</b>	Islet 1 Rabbit Polyclonal Antibody
<b>Description</b>	Primary antibody
<b>Host</b>	Rabbit
<b>Application</b>	WB,ICC/IF,FC,IP
<b>Reactivity</b>	Human

## Performance

<b>Conjugation</b>	Unconjugated
<b>Modification</b>	Unmodified
<b>Isotype</b>	IgG
<b>Clonality</b>	Polyclonal Antibody
<b>Form</b>	Liquid
<b>Storage</b>	Store at 4°C short term. Aliquot and store at -20°C long term. Avoid freeze/thaw cycles.
<b>Buffer</b>	50mM Tris-Glycine(pH 7.4), 0.15M NaCl, 40% Glycerol, 0.01% Sodium azide and 0.05% BSA
<b>Purification</b>	Affinity Purified

## Immunogen

<b>Gene Name</b>	ISL1
<b>Alternative Names</b>	ISL1; Insulin gene enhancer protein ISL-1; Islet-1
<b>Gene ID</b>	3670
<b>SwissProt ID</b>	P61371

## Application

<b>Dilution Ratio</b>	WB: 1/500-1/1000 IF: 1/50-1/200 IP: 1/20 FC: 1/50-1/100
<b>Molecular Weight</b>	Calculated MW: 39 kDa; Observed MW: 39 kDa

## Background

**Product Name: Islet 1 Rabbit Polyclonal Antibody**  
**Catalog #: APRab01398**

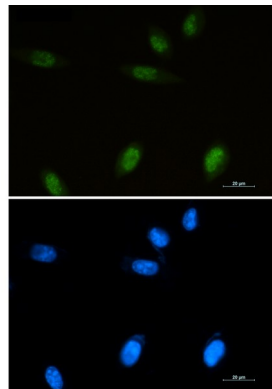


ISL1 (ISL1 transcription factor, LIM/homeodomain) is a member of the LIM/homeodomain family of transcription factors. It binds to the enhancer region of the insulin gene, among others, and may play an important role in regulating insulin gene expression. It is central to the development of pancreatic cell lineages and may also be required for motor neuron generation. Islet-1 expression defines cardiac progenitor cell populations and is required for normal cardiac development and asymmetry.

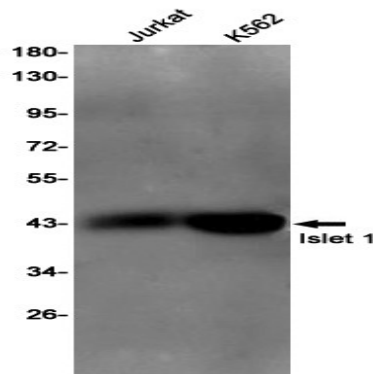
## Research Area

Neuroscience

## Image Data



Immunocytochemistry analysis of Islet 1 (green) in SH-SY5Y using Islet 1 antibody, and DAPI (blue).



Western blot analysis of Islet 1 in Jurkat, K562 lysates using Islet 1 antibody.

## Note

For research use only.