

Summary

Production Name	LEF1 Rabbit Polyclonal Antibody
Description	Primary antibody
Host	Rabbit
Application	WB,IHC-F,IHC-P,ICC/IF,FC,IP
Reactivity	Human,Rat

Performance

Conjugation	Unconjugated
Modification	Unmodified
Isotype	IgG
Clonality	Polyclonal Antibody
Form	Liquid
Storage	Store at 4°C short term. Aliquot and store at -20°C long term. Avoid freeze/thaw cycles.
Buffer	50mM Tris-Glycine(pH 7.4), 0.15M NaCl, 40% Glycerol, 0.01% Sodium azide and 0.05% BSA
Purification	Affinity Purified

Immunogen

Gene Name	LEF1
Alternative Names	LEF1; Lymphoid enhancer-binding factor 1; LEF-1; T cell-specific transcription factor 1-alpha; TCF1-alpha
Gene ID	51176
SwissProt ID	Q9UJU2

Application

Dilution Ratio	WB: 1/500-1/1000 IHC: 1/50-1/100 IF: 1/50-1/200 IP: 1/20 FC: 1/50-1/100
Molecular Weight	Calculated MW: 44 kDa; Observed MW: 25-58 kDa

Product Name: LEF1 Rabbit Polyclonal Antibody
Catalog #: APRab01396



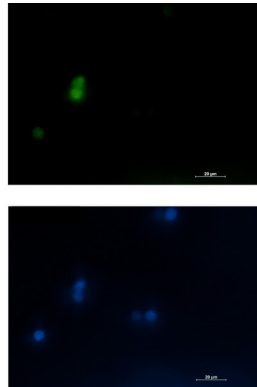
Background

Participates in the Wnt signaling pathway. Activates transcription of target genes in the presence of CTNNB1 and EP300. May play a role in hair cell differentiation and follicle morphogenesis. TLE1, TLE2, TLE3 and TLE4 repress transactivation mediated by LEF1 and CTNNB1. Regulates T-cell receptor alpha enhancer function. Binds DNA in a sequence-specific manner. PIAG antagonizes both Wnt-dependent and Wnt-independent activation by LEF1 (By similarity).

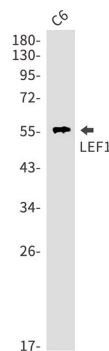
Research Area

Epigenetics and Nuclear Signaling

Image Data

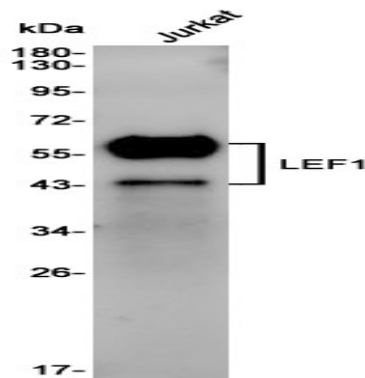


Immunocytochemistry analysis of LEF1 (green) in Jurkat using LEF1 antibody, and DAPI (blue).

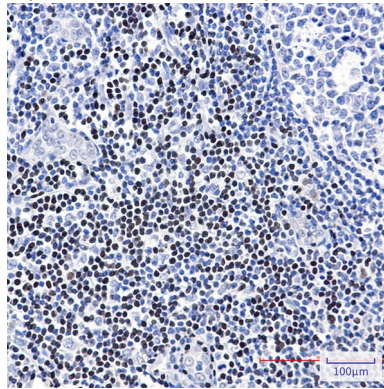


Western blot analysis of LEF1 in C6 lysates using LEF1 antibody.

Product Name: LEF1 Rabbit Polyclonal Antibody
Catalog #: APRab01396



Western blot analysis of LEF1 in Jurkat lysates using LEF1 antibody



Immunohistochemistry analysis of paraffin-embedded Human tonsil using LEF1 antibody. High-pressure and temperature Sodium Citrate pH 6.0 was used for antigen retrieval.

Note

For research use only.