

## Summary

<b>Production Name</b>	Fascin Rabbit Polyclonal Antibody
<b>Description</b>	Primary antibody
<b>Host</b>	Rabbit
<b>Application</b>	WB,IHC-F,IHC-P,ICC/IF,FC,IP
<b>Reactivity</b>	Human,Mouse,Rat,Monkey

## Performance

<b>Conjugation</b>	Unconjugated
<b>Modification</b>	Unmodified
<b>Isotype</b>	IgG
<b>Clonality</b>	Polyclonal Antibody
<b>Form</b>	Liquid
<b>Storage</b>	Store at 4°C short term. Aliquot and store at -20°C long term. Avoid freeze/thaw cycles.
<b>Buffer</b>	50mM Tris-Glycine(pH 7.4), 0.15M NaCl, 40% Glycerol, 0.01% Sodium azide and 0.05% BSA
<b>Purification</b>	Affinity Purified

## Immunogen

<b>Gene Name</b>	FSCN1
<b>Alternative Names</b>	55 kDa actin bundling protein; Actin bundling protein; FAN1; Fascin 1; Fascin; Singed (Drosophila) like (sea urchin fascin homolog like); Fascin homolog 1; Fascin
<b>Gene ID</b>	6624
<b>SwissProt ID</b>	Q16658

## Application

<b>Dilution Ratio</b>	WB: 1/500-1/1000 IHC: 1/50-1/100 IF: 1/50-1/200 IP: 1/20 FC: 1/50-1/100
<b>Molecular Weight</b>	Calculated MW: 55 kDa; Observed MW: 55 kDa

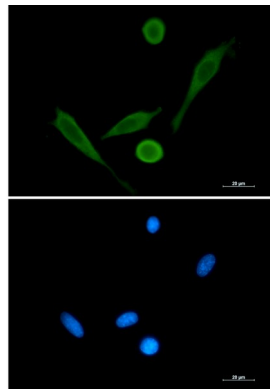
## Background

Promotes cross-linkage of parallel actin filaments during the formation of cell protrusions (lamellipodia and filopodia), and therefore plays an important role in regulating cell migration. It has been reported that fascin may also regulate filopodia formation by a mechanism independent of its actin-bundling functions, though less is known about this mechanism of action.

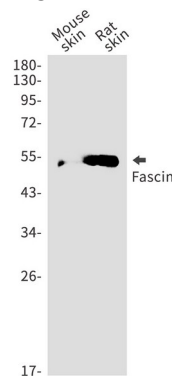
## Research Area

Cell Biology

## Image Data

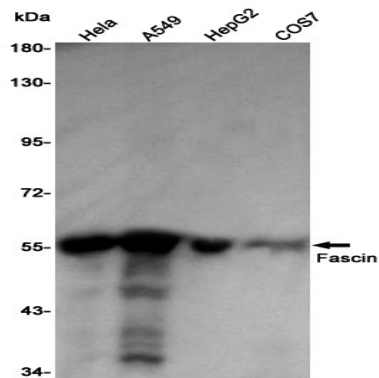


Immunocytochemistry analysis of Fascin (green) in 3T3 using Fascin antibody, and DAPI (blue).

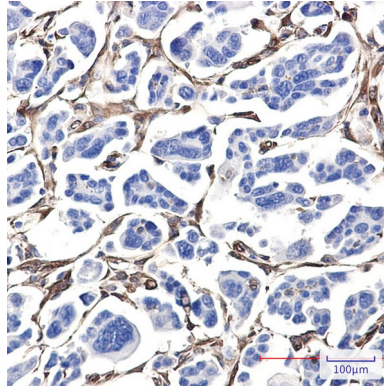


Western blot analysis of Fascin in mouse skin, rat skin lysates using Fascin antibody.

**Product Name: Fascin Rabbit Polyclonal Antibody**  
**Catalog #: APRab01395**



Western blot analysis of Fascin in HeLa, A549, HepG2, COS7 lysates using Fascin antibody



Immunohistochemistry analysis of paraffin-embedded Human Cholangiocarcinoma using Fascin antibody. High-pressure and temperature Sodium Citrate pH 6.0 was used for antigen retrieval.

## **Note**

For research use only.