

Summary

Production Name	PARP1 Rabbit Polyclonal Antibody
Description	Primary antibody
Host	Rabbit
Application	WB,IHC-P,FC
Reactivity	Human

Performance

Conjugation	Unconjugated
Modification	Unmodified
Isotype	IgG
Clonality	Polyclonal Antibody
Form	Liquid
Storage	Store at 4°C short term. Aliquot and store at -20°C long term. Avoid freeze/thaw cycles.
Buffer	50mM Tris-Glycine(pH 7.4), 0.15M NaCl, 40% Glycerol, 0.01% Sodium azide and 0.05% BSA
Purification	Affinity Purified

Immunogen

Gene Name	PARP1 PARP1; ADPRT; PPOL; Poly [ADP-ribose] polymerase 1; PARP-1; ADP-ribosyltransferase
Alternative Names	diphtheria toxin-like 1; ARTD1; NAD(+) ADP-ribosyltransferase 1; ADPRT 1; Poly[ADP-ribose] synthase 1
Gene ID	142
SwissProt ID	P09874

Application

Dilution Ratio	WB: 1/500-1/1000 IHC: 1/50-1/100 FC: 1/50-1/100
Molecular Weight	Calculated MW: 113 kDa; Observed MW: 116,24 kDa

Product Name: PARP1 Rabbit Polyclonal Antibody
Catalog #: APRab01384



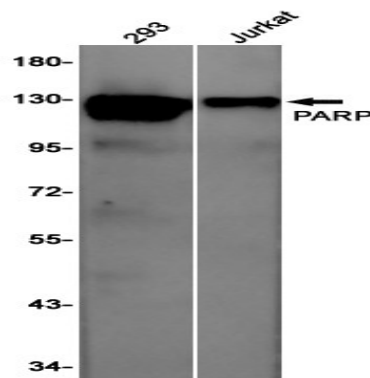
Background

Involved in the base excision repair (BER) pathway, by catalyzing the poly(ADP-ribosylation) of a limited number of acceptor proteins involved in chromatin architecture and in DNA metabolism. This modification follows DNA damages and appears as an obligatory step in a detection/signaling pathway leading to the reparation of DNA strand breaks.

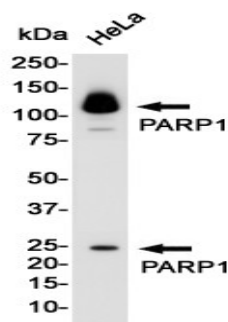
Research Area

Epigenetics and Nuclear Signaling

Image Data

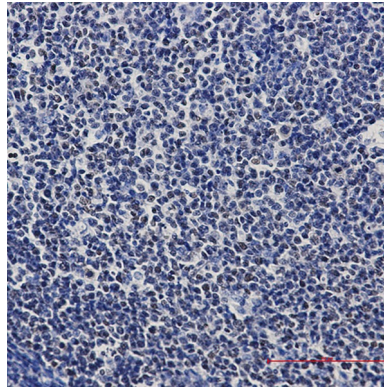


Western blot analysis of PARP in 293, Jurkat lysates using PARP1 antibody.



Western blot analysis of PARP in HeLa lysates using PARP antibody.

Product Name: PARP1 Rabbit Polyclonal Antibody
Catalog #: APRab01384



Immunohistochemistry analysis of paraffin-embedded Human tonsil using PARP1 antibody. High-pressure and temperature Sodium Citrate pH 6.0 was used for antigen retrieval.

Note

For research use only.