

---

## Summary

<b>Production Name</b>	Glutaminase Rabbit Polyclonal Antibody
<b>Description</b>	Primary antibody
<b>Host</b>	Rabbit
<b>Application</b>	WB,IHC-F,IHC-P,ICC/IF,FC
<b>Reactivity</b>	Human

## Performance

<b>Conjugation</b>	Unconjugated
<b>Modification</b>	Unmodified
<b>Isotype</b>	IgG
<b>Clonality</b>	Polyclonal Antibody
<b>Form</b>	Liquid
<b>Storage</b>	Store at 4°C short term. Aliquot and store at -20°C long term. Avoid freeze/thaw cycles.
<b>Buffer</b>	50mM Tris-Glycine(pH 7.4), 0.15M NaCl, 40% Glycerol, 0.01% Sodium azide and 0.05% BSA
<b>Purification</b>	Affinity Purified

## Immunogen

<b>Gene Name</b>	GLS
<b>Alternative Names</b>	Glutaminase kidney isoform; GLS; GLS1; KGA; K-glutaminase; GAM; GAC; Glutaminase C; L-glutamine amidohydrolase
<b>Gene ID</b>	2744
<b>SwissProt ID</b>	O94925

## Application

<b>Dilution Ratio</b>	WB: 1/500-1/1000 IHC: 1/50-1/100 IF: 1/50-1/200 FC: 1/50-1/100
<b>Molecular Weight</b>	Calculated MW: 73 kDa; Observed MW: 73,65 kDa

**Product Name: Glutaminase Rabbit Polyclonal Antibody**  
**Catalog #: APRab01376**



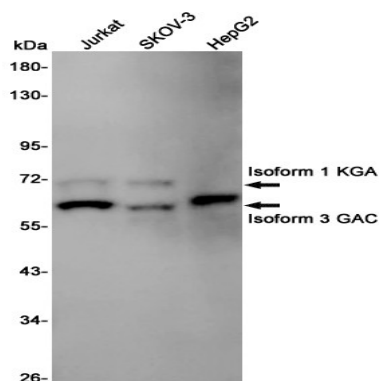
## Background

Catalyzes the first reaction in the primary pathway for the renal catabolism of glutamine. Plays a role in maintaining acid-base homeostasis. Regulates the levels of the neurotransmitter glutamate in the brain. Isoform 2 lacks catalytic activity. Isoform 1 and isoform 3 are activated by phosphate. Inhibited by BPTES. BPTES binds between subunits and favors dissociation of the tetramer into dimers.

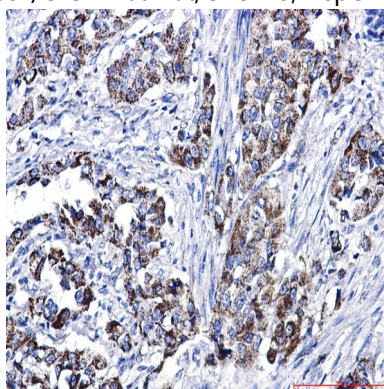
## Research Area

Neuroscience

## Image Data



Western blot analysis of Glutaminase1/GLS1 in Jurkat, SKOV-3, HepG2 lysates using Glutaminase antibody.



Immunohistochemistry analysis of paraffin-embedded Human lung cancer using Glutaminase antibody. High-pressure and temperature Sodium Citrate pH 6.0 was used for antigen retrieval.

## Note

For research use only.