
Summary

Production Name	CAP1 Rabbit Polyclonal Antibody
Description	Primary antibody
Host	Rabbit
Application	WB,IHC-F,IHC-P,ICC/IF,IP
Reactivity	Human

Performance

Conjugation	Unconjugated
Modification	Unmodified
Isotype	IgG
Clonality	Polyclonal Antibody
Form	Liquid
Storage	Store at 4°C short term. Aliquot and store at -20°C long term. Avoid freeze/thaw cycles.
Buffer	50mM Tris-Glycine(pH 7.4), 0.15M NaCl, 40% Glycerol, 0.01% Sodium azide and 0.05% BSA
Purification	Affinity Purified

Immunogen

Gene Name	CAP1
Alternative Names	CAP; CAP1-PEN
Gene ID	10487
SwissProt ID	Q01518

Application

Dilution Ratio	WB: 1/500-1/1000 IHC: 1/50-1/100 IF: 1/50-1/200 IP: 1/20
Molecular Weight	Calculated MW: 52 kDa; Observed MW: 56 kDa

Background

Product Name: CAP1 Rabbit Polyclonal Antibody
Catalog #: APRab01371

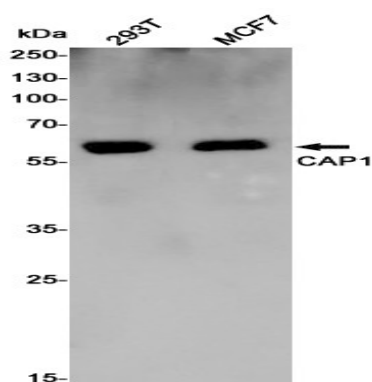


Directly regulates filament dynamics and has been implicated in a number of complex developmental and morphological processes, including mRNA localization and the establishment of cell polarity.

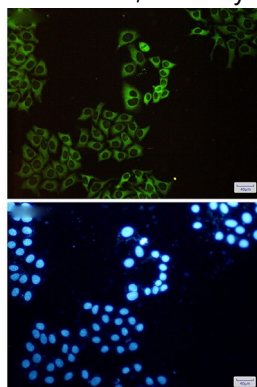
Research Area

Signal Transduction

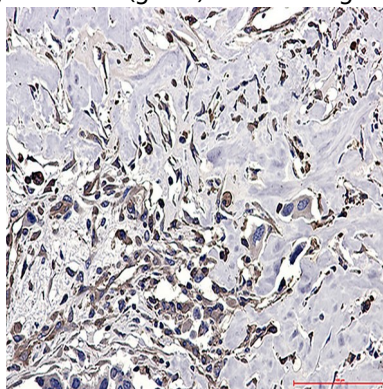
Image Data



Western blot analysis of CAP1 in 293T, MCF-7 lysates using CAP1 antibody.



Immunocytochemistry analysis of CAP1 (green) in HeLa using CAP1 antibody, and DAPI (blue)



Immunohistochemistry analysis of paraffin-embedded Human Cholangiocarcinoma using CAP1 antibody. High-pressure and temperature Sodium Citrate pH 6.0 was used for antigen retrieval.

Product Name: CAP1 Rabbit Polyclonal Antibody
Catalog #: APRab01371



Note

For research use only.