

## Summary

<b>Production Name</b>	PSMD14 Rabbit Polyclonal Antibody
<b>Description</b>	Primary antibody
<b>Host</b>	Rabbit
<b>Application</b>	WB,IHC-F,IHC-P,ICC/IF
<b>Reactivity</b>	Human,Mouse,Rat,Monkey

## Performance

<b>Conjugation</b>	Unconjugated
<b>Modification</b>	Unmodified
<b>Isotype</b>	IgG
<b>Clonality</b>	Polyclonal Antibody
<b>Form</b>	Liquid
<b>Storage</b>	Store at 4°C short term. Aliquot and store at -20°C long term. Avoid freeze/thaw cycles.
<b>Buffer</b>	50mM Tris-Glycine(pH 7.4), 0.15M NaCl, 40% Glycerol, 0.01% Sodium azide and 0.05% BSA
<b>Purification</b>	Affinity Purified

## Immunogen

<b>Gene Name</b>	PSMD14
<b>Alternative Names</b>	26S proteasome non-ATPase regulatory subunit 14; PAD1; POH1; Psm14; RPN11
<b>Gene ID</b>	10213
<b>SwissProt ID</b>	O00487

## Application

<b>Dilution Ratio</b>	WB: 1/500-1/1000 IHC: 1/50-1/100 IF: 1/50-1/200
<b>Molecular Weight</b>	Calculated MW: 35 kDa; Observed MW: 35 kDa

## Background

**Product Name: PSMD14 Rabbit Polyclonal Antibody**  
**Catalog #: APRab01370**

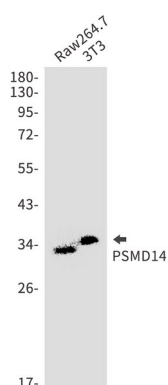


Metalloprotease component of the 26S proteasome that specifically cleaves 'Lys-63'-linked polyubiquitin chains. The 26S proteasome is involved in the ATP-dependent degradation of ubiquitinated proteins. The function of the 'Lys-63'-specific deubiquitination of the proteasome is unclear.

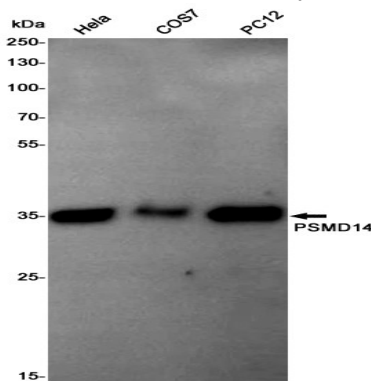
## Research Area

Cell Biology

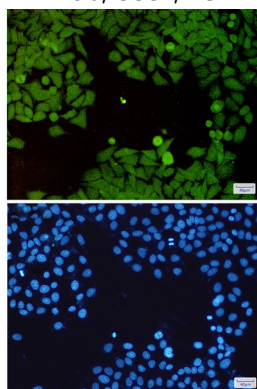
## Image Data



Western blot analysis of PSMD14 in Raw264.7, 3T3 lysates using PSMD14 antibody.

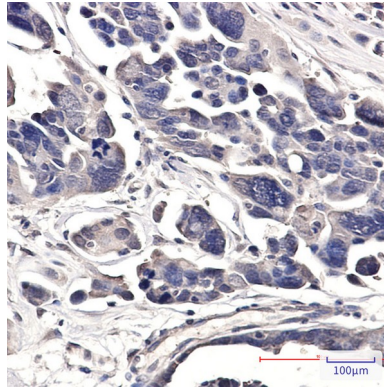


Western blot analysis of PSMD14 in HeLa, COS7, PC-12 lysates using PSMD14 antibody.



Immunocytochemistry analysis of PSMD14(green) in HeLa using PSMD14 antibody, and DAPI(blue)

**Product Name: PSMD14 Rabbit Polyclonal Antibody**  
**Catalog #: APRab01370**



Immunohistochemistry analysis of paraffin-embedded Human Cholangiocarcinoma using PSMD14 antibody. High-pressure and temperature Sodium Citrate pH 6.0 was used for antigen retrieval.

**Note**

For research use only.