

Summary

| | |
|------------------------|----------------------------------|
| Production Name | GDF15 Rabbit Polyclonal Antibody |
| Description | Primary antibody |
| Host | Rabbit |
| Application | WB,IP |
| Reactivity | Human |

Performance

| | |
|---------------------|------------------------------------------------------------------------------------------|
| Conjugation | Unconjugated |
| Modification | Unmodified |
| Isotype | IgG |
| Clonality | Polyclonal Antibody |
| Form | Liquid |
| Storage | Store at 4°C short term. Aliquot and store at -20°C long term. Avoid freeze/thaw cycles. |
| Buffer | 50mM Tris-Glycine(pH 7.4), 0.15M NaCl, 40% Glycerol, 0.01% Sodium azide and 0.05% BSA |
| Purification | Affinity Purified |

Immunogen

| | |
|--------------------------|--------------------------------------------------------------------------------------------------------------------------------------------------------------------------------------------------------------------------------------------------|
| Gene Name | GDF15 |
| Alternative Names | GDF15; MIC1; PDF; PLAB; PTGFB; Growth/differentiation factor 15; GDF-15; Macrophage inhibitory cytokine 1; MIC-1; NSAID-activated gene 1 protein; NAG-1; NSAID-regulated gene 1 protein; NRG-1; Placental TGF-beta; Placental bone morphogenetic |
| Gene ID | 9518 |
| SwissProt ID | Q99988 |

Application

| | |
|-------------------------|-----------------------------------------------|
| Dilution Ratio | WB: 1/500-1/1000 IP: 1/20 |
| Molecular Weight | Calculated MW: 34 kDa; Observed MW: 35,13 kDa |

Product Name: GDF15 Rabbit Polyclonal Antibody
Catalog #: APRab01365



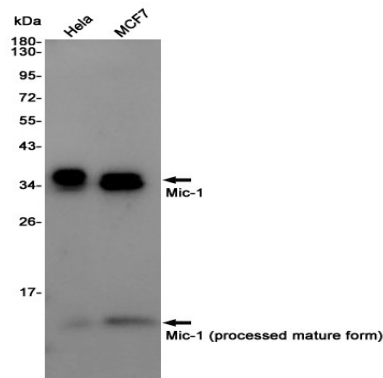
Background

Highly expressed in placenta, with lower levels in prostate and colon and some expression in kidney.

Research Area

Cell Biology

Image Data



Western blot analysis of GDF15/Mic1 in HeLa, MCF-7 lysates using GDF15 antibody.

Note

For research use only.