

**Product Name: SA2 Rabbit Polyclonal Antibody**  
**Catalog #: APRab01360**



## Summary

<b>Production Name</b>	SA2 Rabbit Polyclonal Antibody
<b>Description</b>	Primary antibody
<b>Host</b>	Rabbit
<b>Application</b>	WB,IHC-F,IHC-P,ICC/IF,FC
<b>Reactivity</b>	Human,Mouse,Rat

## Performance

<b>Conjugation</b>	Unconjugated
<b>Modification</b>	Unmodified
<b>Isotype</b>	IgG
<b>Clonality</b>	Polyclonal Antibody
<b>Form</b>	Liquid
<b>Storage</b>	Store at 4°C short term. Aliquot and store at -20°C long term. Avoid freeze/thaw cycles.
<b>Buffer</b>	50mM Tris-Glycine(pH 7.4), 0.15M NaCl, 40% Glycerol, 0.01% Sodium azide and 0.05% BSA
<b>Purification</b>	Affinity Purified

## Immunogen

<b>Gene Name</b>	STAG2
<b>Alternative Names</b>	SA 2; SA-2; SA2; SCC3 homolog 2; SCC3B; stag2; Stromal antigen 2
<b>Gene ID</b>	10735
<b>SwissProt ID</b>	Q8N3U4

## Application

<b>Dilution Ratio</b>	WB: 1/500-1/1000 IHC: 1/50-1/100 IF: 1/50-1/200 FC: 1/50-1/100
<b>Molecular Weight</b>	Calculated MW: 141 kDa; Observed MW: 141 kDa

## Background

**Product Name: SA2 Rabbit Polyclonal Antibody**  
**Catalog #: APRab01360**

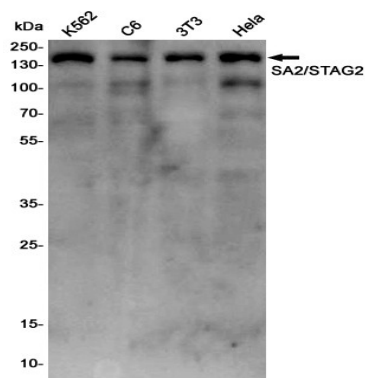


Component of cohesin complex, a complex required for the cohesion of sister chromatids after DNA replication. The cohesin complex apparently forms a large proteinaceous ring within which sister chromatids can be trapped. At anaphase, the complex is cleaved and dissociates from chromatin, allowing sister chromatids to segregate.

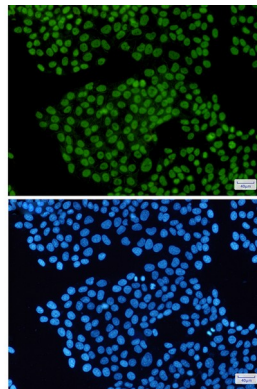
## Research Area

Cell Biology

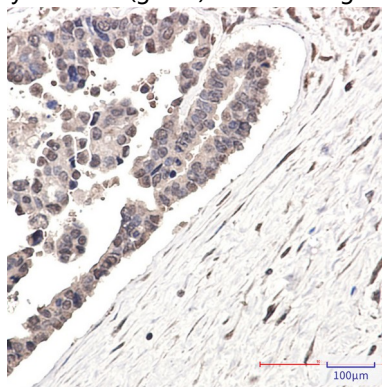
## Image Data



Western blot analysis of SA2/STAG2 in K562, C6, 3T3, HeLa lysates using SA2 antibody.



Immunocytochemistry analysis of SA2(green) in HeLa using SA2 antibody, and DAPI(blue)



Immunohistochemistry analysis of paraffin-embedded Human Cholangiocarcinoma using SA2 antibody. High-pressure and

**Product Name: SA2 Rabbit Polyclonal Antibody**  
**Catalog #: APRab01360**



---

temperature Sodium Citrate pH 6.0 was used for antigen retrieval.

**Note**

For research use only.