

## Summary

<b>Production Name</b>	TOMM20 Rabbit Polyclonal Antibody
<b>Description</b>	Primary antibody
<b>Host</b>	Rabbit
<b>Application</b>	WB,IHC-F,IHC-P,ICC/IF,FC
<b>Reactivity</b>	Human,Mouse

## Performance

<b>Conjugation</b>	Unconjugated
<b>Modification</b>	Unmodified
<b>Isotype</b>	IgG
<b>Clonality</b>	Polyclonal Antibody
<b>Form</b>	Liquid
<b>Storage</b>	Store at 4°C short term. Aliquot and store at -20°C long term. Avoid freeze/thaw cycles.
<b>Buffer</b>	50mM Tris-Glycine(pH 7.4), 0.15M NaCl, 40% Glycerol, 0.01% Sodium azide and 0.05% BSA
<b>Purification</b>	Affinity Purified

## Immunogen

<b>Gene Name</b>	TOMM20 TOMM20; KIAA0016; Mitochondrial import receptor subunit TOM20 homolog;
<b>Alternative Names</b>	Mitochondrial 20 kDa outer membrane protein; Outer mitochondrial membrane receptor Tom20
<b>Gene ID</b>	9804
<b>SwissProt ID</b>	Q15388

## Application

<b>Dilution Ratio</b>	WB: 1/500-1/1000 IHC: 1/50-1/100 IF: 1/50-1/200 FC: 1/50-1/100
<b>Molecular Weight</b>	Calculated MW: 16 kDa; Observed MW: 16 kDa

**Product Name: TOMM20 Rabbit Polyclonal Antibody**  
**Catalog #: APRab01355**



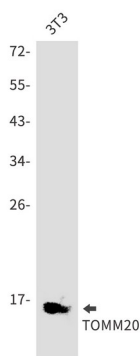
## Background

Central component of the receptor complex responsible for the recognition and translocation of cytosolically synthesized mitochondrial preproteins. Together with TOM22 functions as the transit peptide receptor at the surface of the mitochondrion outer membrane and facilitates the movement of preproteins into the TOM40 translocation pore.

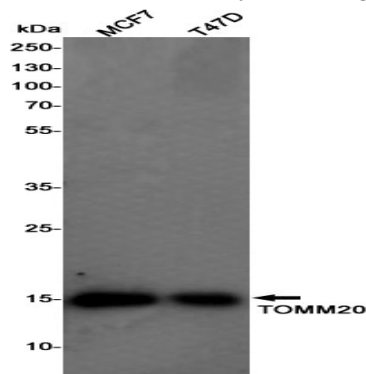
## Research Area

Signal Transduction

## Image Data

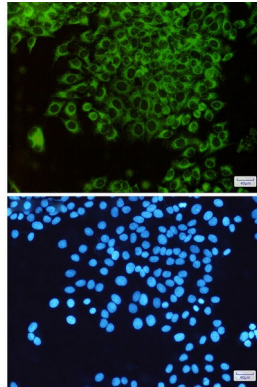


Western blot analysis of TOMM20 in 3T3 lysates using TOMM20 antibody.

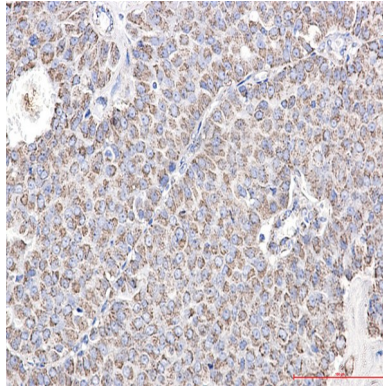


Western blot analysis of TOMM20 in MCF-7, T47D lysates using TOMM20 antibody.

**Product Name: TOMM20 Rabbit Polyclonal Antibody**  
**Catalog #: APRab01355**



Immunocytochemistry analysis of TOMM20(green) in HeLa using TOMM20 antibody, and DAPI(blue)



Immunohistochemistry analysis of paraffin-embedded Human breast cancer using TOMM20 antibody. High-pressure and temperature Sodium Citrate pH 6.0 was used for antigen retrieval.

## **Note**

For research use only.