

Summary

Production Name	Nrf1 Rabbit Polyclonal Antibody
Description	Primary antibody
Host	Rabbit
Application	WB,IHC-P,ICC/IF,FC,IP
Reactivity	Human,Mouse,Rat

Performance

Conjugation	Unconjugated
Modification	Unmodified
Isotype	IgG
Clonality	Polyclonal Antibody
Form	Liquid
Storage	Store at 4°C short term. Aliquot and store at -20°C long term. Avoid freeze/thaw cycles.
Buffer	Rabbit IgG in phosphate buffered saline , pH 7.4, 150mM NaCl, 0.02% sodium azide and 50% glycerol.
Purification	Affinity Chromatography

Immunogen

Gene Name	NRF1 alpha pal; alpha palindromic binding protein; Alpha palindromic-binding protein;
Alternative Names	Alpha-pal; locus control region factor 1; NFE2 related factor 1; NRF-1; Nrf1; NRF1_HUMAN; Nuclear respiratory factor 1; transcription factor 11.
Gene ID	4899
SwissProt ID	Q16656

Application

Dilution Ratio	WB: 1/500-1/1000 IHC: 1/50-1/100 IF: 1/50-1/200 IP: 1/20 FC: 1/50-1/100
-----------------------	---

Product Name: Nrf1 Rabbit Polyclonal Antibody
Catalog #: APRab01352



Molecular Weight

Calculated MW: 54 kDa; Observed MW: 68 kDa

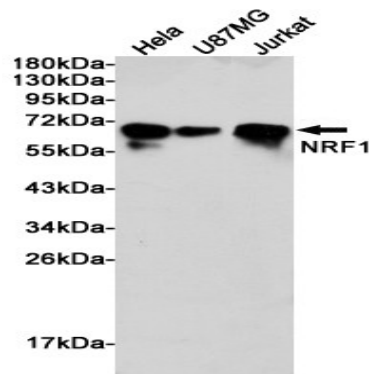
Background

Transcription factor that activates the expression of the EIF2S1 (EIF2-alpha) gene. Links the transcriptional modulation of key metabolic genes to cellular growth and development. Implicated in the control of nuclear genes required for respiration, heme biosynthesis, and mitochondrial DNA transcription and replication.

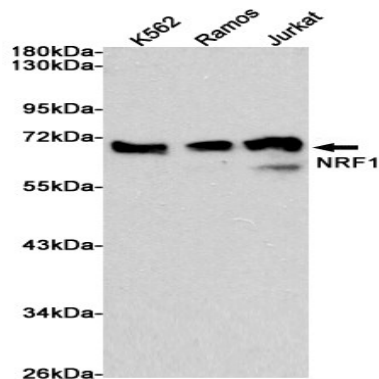
Research Area

Epigenetics and Nuclear Signaling

Image Data



Western blot analysis of Nrf1 in HeLa, U87-MG and Jurkat lysates using Nrf1 antibody.



Western blot analysis of Nrf1 in K562, Ramos and Jurkat lysates using NRF1 antibody.

Note

For research use only.