

Product Name: Phospho-PKC epsilon (Ser729) Rabbit Polyclonal Antibody
Catalog #: APRab00975



Summary

Production Name	Phospho-PKC epsilon (Ser729) Rabbit Polyclonal Antibody
Description	Primary antibody
Host	Rabbit
Application	WB,IHC-P,ELISA
Reactivity	Human,Mouse,Rat

Performance

Conjugation	Unconjugated
Modification	Phosphorylated
Isotype	IgG
Clonality	Polyclonal Antibody
Form	Liquid
Storage	Store at 4°C short term. Aliquot and store at -20°C long term. Avoid freeze/thaw cycles.
Buffer	Liquid in PBS containing 50% glycerol, 0.5% BSA and 0.02% sodium azide, pH 7.3.
Purification	Affinity Purified

Immunogen

Gene Name	PRKCE
Alternative Names	nPKC epsilon; PKCE; Pkcea; PRKCE; Protein kinase C epsilon; Protein kinase C epsilon type
Gene ID	5581.0
SwissProt ID	Q02156

Application

Dilution Ratio	WB: 1/500-1/1000 IHC: 1/50-1/100 ELISA: 1/10000
Molecular Weight	Calculated MW: 84 kDa; Observed MW: 84 kDa

Product Name: Phospho-PKC epsilon (Ser729) Rabbit Polyclonal Antibody
Catalog #: APRab00975



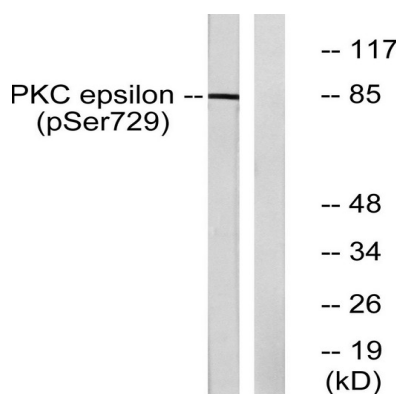
Background

protein kinase C epsilon (PRKCE) Homo sapiens Protein kinase C (PKC) is a family of serine- and threonine-specific protein kinases that can be activated by calcium and the second messenger diacylglycerol. PKC family members phosphorylate a wide variety of protein targets and are known to be involved in diverse cellular signaling pathways. PKC family members also serve as major receptors for phorbol esters, a class of tumor promoters. Each member of the PKC family has a specific expression profile and is believed to play a distinct role in cells. The protein encoded by this gene is one of the PKC family members.

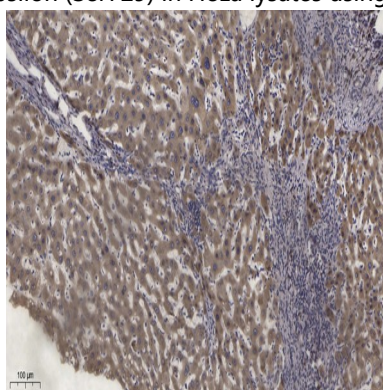
Research Area

Signal Transduction

Image Data



Western blot analysis of Phospho-PKC epsilon (Ser729) in HeLa lysates using Phospho-PKC epsilon (Ser729) antibody.



Immunohistochemistry analysis of paraffin-embedded Human Liver Cancer using Phospho-PKC epsilon (Ser729) antibody. High-pressure and temperature Tris-EDTA pH 9.0 was used for antigen retrieval.

Note

For research use only.

**Product Name: Phospho-PKC epsilon (Ser729) Rabbit
Polyclonal Antibody
Catalog #: APRab00975**

