

Product Name: Phospho-p53 (Ser15) Rabbit Polyclonal Antibody
Catalog #: APRab00950



Summary

Production Name	Phospho-p53 (Ser15) Rabbit Polyclonal Antibody
Description	Primary antibody
Host	Rabbit
Application	WB,IHC-P,ICC/IF
Reactivity	Human

Performance

Conjugation	Unconjugated
Modification	Phosphorylated
Isotype	IgG
Clonality	Polyclonal Antibody
Form	Liquid
Storage	Store at 4°C short term. Aliquot and store at -20°C long term. Avoid freeze/thaw cycles.
Buffer	Liquid in PBS containing 50% glycerol, 0.5% BSA and 0.02% sodium azide, pH 7.3.
Purification	Affinity Purified

Immunogen

Gene Name	TP53
Alternative Names	TP53; P53; Cellular tumor antigen p53; Antigen NY-CO-13; Phosphoprotein p53; Tumor suppressor p53
Gene ID	7157
SwissProt ID	P04637

Application

Dilution Ratio	WB: 1/500-1/1000 IHC: 1/50-1/100 ICC: 1/100-1/200
Molecular Weight	Calculated MW: 44 kDa; Observed MW: 53 kDa

Product Name: Phospho-p53 (Ser15) Rabbit Polyclonal Antibody
Catalog #: APRab00950



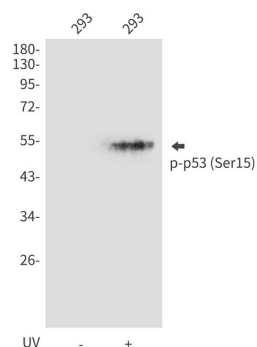
Background

Tumor protein p53, a nuclear protein, plays an essential role in the regulation of cell cycle, specifically in the transition from G0 to G1. It is found in very low levels in normal cells, however, in a variety of transformed cell lines, it is expressed in high amounts, and believed to contribute to transformation and malignancy. p53 is a DNA-binding protein containing DNA-binding, oligomerization and transcription activation domains.

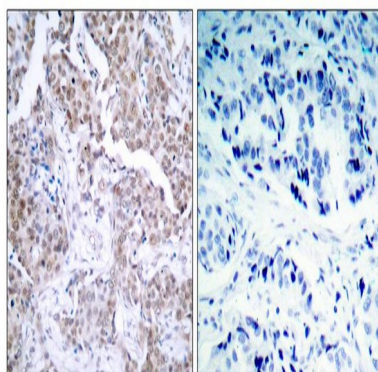
Research Area

Cell Biology

Image Data

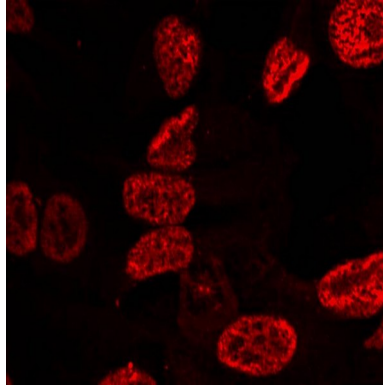


Western blot analysis of Phospho-p53 (Ser15) in 293 lysates using Phospho-p53 (Ser15) antibody.



Immunohistochemistry analysis of paraffin-embedded Human breast carcinoma tissue using p53 (Phospho-Ser15) antibody. High-pressure and temperature Sodium Citrate pH 6.0 was used for antigen retrieval. Sample with blocking peptide on the right.

**Product Name: Phospho-p53 (Ser15) Rabbit Polyclonal
Antibody**
Catalog #: APRab00950



Immunofluorescence analysis of Phospho-p53 (Ser15) in HeLa cells using p53(Phospho-Ser15) antibody(red).

Note

For research use only.