

**Product Name: Phospho-PTEN (Ser380) Rabbit Polyclonal Antibody**  
**Catalog #: APRab00944**

---

## Summary

<b>Production Name</b>	Phospho-PTEN (Ser380) Rabbit Polyclonal Antibody
<b>Description</b>	Primary antibody
<b>Host</b>	Rabbit
<b>Application</b>	IHC-P, ICC/IF
<b>Reactivity</b>	Human, Mouse, Rat

## Performance

<b>Conjugation</b>	Unconjugated
<b>Modification</b>	Phosphorylated
<b>Isotype</b>	IgG
<b>Clonality</b>	Polyclonal Antibody
<b>Form</b>	Liquid
<b>Storage</b>	Store at 4°C short term. Aliquot and store at -20°C long term. Avoid freeze/thaw cycles.
<b>Buffer</b>	Liquid in PBS containing 50% glycerol, 0.5% BSA and 0.02% sodium azide, pH 7.3.
<b>Purification</b>	Affinity Purified

## Immunogen

<b>Gene Name</b>	PTEN PTEN; MMAC1; TEP1; Phosphatidylinositol 3; 4; 5-trisphosphate 3-phosphatase and
<b>Alternative Names</b>	dual-specificity protein phosphatase PTEN; Mutated in multiple advanced cancers 1; Phosphatase and tensin homolog
<b>Gene ID</b>	5728
<b>SwissProt ID</b>	P60484

## Application

<b>Dilution Ratio</b>	IHC: 1/50-1/100 ICC: 1/100-1/200
<b>Molecular Weight</b>	-

**Product Name: Phospho-PTEN (Ser380) Rabbit Polyclonal Antibody**  
**Catalog #: APRab00944**

---

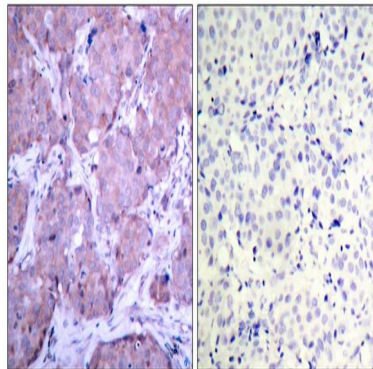
## Background

Tumor suppressor. Acts as a dual-specificity protein phosphatase, dephosphorylating tyrosine-, serine- and threonine-phosphorylated proteins. Also acts as a lipid phosphatase, removing the phosphate in the D3 position of the inositol ring from phosphatidylinositol 3,4,5-trisphosphate, phosphatidylinositol 3,4-diphosphate, phosphatidylinositol 3-phosphate and inositol 1,3,4,5-tetrakisphosphate with order of substrate preference in vitro  $\text{PtdIns}(3,4,5)\text{P}_3 > \text{PtdIns}(3,4)\text{P}_2 > \text{PtdIns}3\text{P} > \text{Ins}(1,3,4,5)\text{P}_4$ .

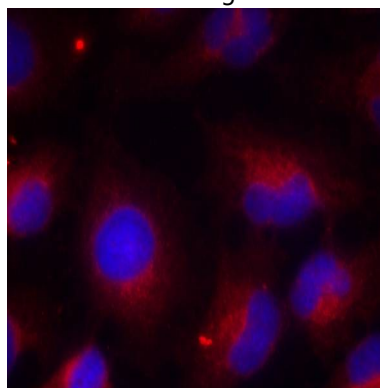
## Research Area

Cell Biology

## Image Data



Immunohistochemistry analysis of paraffin-embedded Human breast carcinoma tissue using Phospho-PTEN (Ser380) antibody. High-pressure and temperature Sodium Citrate pH 6.0 was used for antigen retrieval. Sample with blocking peptide on the right.



Immunofluorescence analysis of Phospho-PTEN (Ser380) in HeLa cells using PTEN (Phospho-Ser380) antibody, and DAPI (blue).

**Product Name: Phospho-PTEN (Ser380) Rabbit  
Polyclonal Antibody  
Catalog #: APRab00944**

---



**Note**

For research use only.