

**Product Name: Phospho-Leptin Receptor (Tyr1141)
Rabbit Polyclonal Antibody
Catalog #: APRab00943**

Summary

Production Name	Phospho-Leptin Receptor (Tyr1141) Rabbit Polyclonal Antibody
Description	Primary antibody
Host	Rabbit
Application	WB,ELISA
Reactivity	Human,Mouse

Performance

Conjugation	Unconjugated
Modification	Phosphorylated
Isotype	IgG
Clonality	Polyclonal Antibody
Form	Liquid
Storage	Store at 4°C short term. Aliquot and store at -20°C long term. Avoid freeze/thaw cycles.
Buffer	Liquid in PBS containing 50% glycerol, 0.5% BSA and 0.02% sodium azide, pH 7.3.
Purification	Affinity Purified

Immunogen

Gene Name	LEPR
Alternative Names	Leptin receptor; LEP-R; HuB219 OB receptor; OB-R; CD295; LEPR; DB; OBR
Gene ID	3953
SwissProt ID	P48357

Application

Dilution Ratio	WB: 1/500-1/1000 ELISA: 1/10000
Molecular Weight	Calculated MW: 132 kDa; Observed MW: 132 kDa

Background

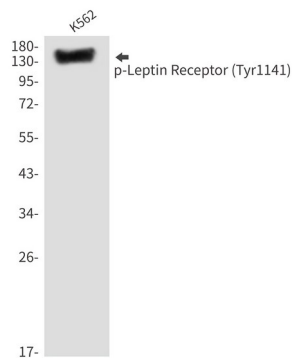
Product Name: Phospho-Leptin Receptor (Tyr1141)
Rabbit Polyclonal Antibody
Catalog #: APRab00943

On ligand binding, mediates LEP central and peripheral effects through the activation of different signaling pathways such as JAK2/STAT3 and MAPK cascade/FOS. In the hypothalamus, LEP acts as an appetite-regulating factor that induces a decrease in food intake and an increase in energy consumption by inducing anorexigenic factors and suppressing orexigenic neuropeptides, also regulates bone mass and secretion of hypothalamo-pituitary-adrenal hormones (By similarity).

Research Area

Signal Transduction

Image Data



Western blot analysis of Phospho-Leptin Receptor (Tyr1141) in K562 lysates using Phospho-Leptin Receptor (Tyr1141) antibody.

Note

For research use only.