

Product Name: Phospho-p38 (Tyr323) Rabbit Polyclonal Antibody
Catalog #: APRab00941

Summary

Production Name	Phospho-p38 (Tyr323) Rabbit Polyclonal Antibody
Description	Primary antibody
Host	Rabbit
Application	WB,IHC-P,ELISA
Reactivity	Human,Mouse,Rat

Performance

Conjugation	Unconjugated
Modification	Phosphorylated
Isotype	IgG
Clonality	Polyclonal Antibody
Form	Liquid
Storage	Store at 4°C short term. Aliquot and store at -20°C long term. Avoid freeze/thaw cycles.
Buffer	Liquid in PBS containing 50% glycerol, 0.5% BSA and 0.02% sodium azide, pH 7.3.
Purification	Affinity Purified

Immunogen

Gene Name	MAPK14 MAPK14; CSBP; CSBP1; CSBP2; CSPB1; MXI2; SAPK2A; Mitogen-activated protein kinase
Alternative Names	14; MAP kinase 14; MAPK 14; Cytokine suppressive anti-inflammatory drug-binding protein; CSAID-binding protein; CSBP; MAP kinase MXI2; MAX-interacting protein
Gene ID	1432
SwissProt ID	Q16539

Application

Dilution Ratio	WB: 1/500-1/1000 IHC: 1/50-1/100 ELISA: 1/10000
Molecular Weight	Calculated MW: 41 kDa; Observed MW: 35 kDa

Product Name: Phospho-p38 (Tyr323) Rabbit Polyclonal Antibody
Catalog #: APRab00941



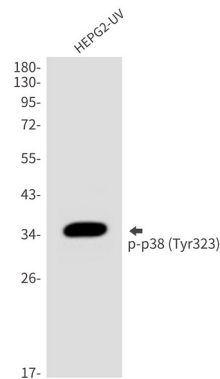
Background

Responds to activation by environmental stress, pro-inflammatory cytokines and lipopolysaccharide (LPS) by phosphorylating a number of transcription factors, such as ELK1 and ATF2 and several downstream kinases, such as MAPKAPK2 and MAPKAPK5. Plays a critical role in the production of some cytokines, for example IL-6.

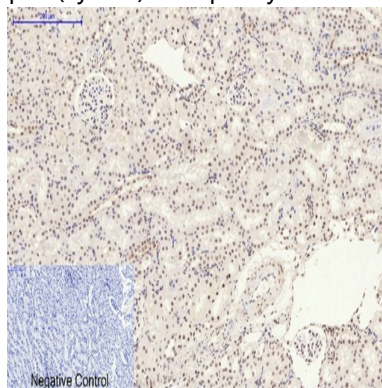
Research Area

Signal Transduction

Image Data



Western blot analysis of Phospho-p38 (Tyr323) in HepG2 lysates using Phospho-p38 (Tyr323) antibody.



Immunohistochemistry analysis of paraffin-embedded rat kidney tissue using Phospho-p38 (Tyr323) antibody. High-pressure and temperature Sodium Citrate pH 6.0 was used for antigen retrieval.

Note

For research use only.