

**Product Name: Phospho-HDAC6 (Ser22) Rabbit
Polyclonal Antibody
Catalog #: APRab00938**

Summary

| | |
|------------------------|--|
| Production Name | Phospho-HDAC6 (Ser22) Rabbit Polyclonal Antibody |
| Description | Primary antibody |
| Host | Rabbit |
| Application | WB |
| Reactivity | Human,Mouse |

Performance

| | |
|---------------------|--|
| Conjugation | Unconjugated |
| Modification | Phosphorylated |
| Isotype | IgG |
| Clonality | Polyclonal Antibody |
| Form | Liquid |
| Storage | Store at 4°C short term. Aliquot and store at -20°C long term. Avoid freeze/thaw cycles. |
| Buffer | Liquid in PBS containing 50% glycerol, 0.5% BSA and 0.02% sodium azide, pH 7.3. |
| Purification | Affinity Purified |

Immunogen

| | |
|--------------------------|---|
| Gene Name | HDAC6 |
| Alternative Names | HDAC6; KIAA0901; JM21; Histone deacetylase 6; HD6 |
| Gene ID | 10013 |
| SwissProt ID | Q9UBN7 |

Application

| | |
|-------------------------|--|
| Dilution Ratio | WB: 1/500-1/1000 |
| Molecular Weight | Calculated MW: 131 kDa; Observed MW: 131 kDa |

Background

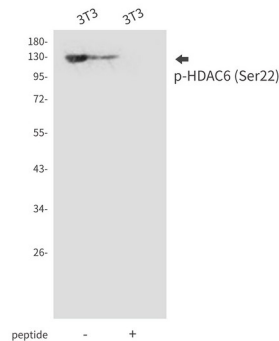
Product Name: Phospho-HDAC6 (Ser22) Rabbit Polyclonal Antibody
Catalog #: APRab00938

Involved in the regulation of many cellular processes, including cell migration, immune synapse formation, viral infection, and degradation of misfolded proteins. HDAC6 binds to both poly-ubiquitinated misfolded proteins and dynein motors, facilitating the transport of misfolded proteins to the aggresome. Required for subsequent recruitment of the autophagic machinery and clearance of aggresomes from the cell. Plays a key role in the protection against the deleterious effects of pathological protein aggregation that occurs in various diseases.

Research Area

Epigenetics and Nuclear Signaling

Image Data



Western blot analysis of Phospho-HDAC6 (Ser22) in 3T3 lysates using Phospho-HDAC6 (Ser22) antibody.

Note

For research use only.