

**Product Name: Phospho-ATF4 (Ser219) Rabbit
Polyclonal Antibody
Catalog #: APRab00926**

Summary

Production Name	Phospho-ATF4 (Ser219) Rabbit Polyclonal Antibody
Description	Primary antibody
Host	Rabbit
Application	WB
Reactivity	Human

Performance

Conjugation	Unconjugated
Modification	Phosphorylated
Isotype	IgG
Clonality	Polyclonal Antibody
Form	Liquid
Storage	Store at 4°C short term. Aliquot and store at -20°C long term. Avoid freeze/thaw cycles.
Buffer	Liquid in PBS containing 50% glycerol, 0.5% BSA and 0.02% sodium azide, pH 7.3.
Purification	Affinity Purified

Immunogen

Gene Name	ATF4
Alternative Names	Cyclic AMP-dependent transcription factor ATF-4; CREB-2; cAMP-responsive element-binding protein 2; DNA-binding protein TAXREB67
Gene ID	468
SwissProt ID	P18848

Application

Dilution Ratio	WB: 1/500-1/1000
Molecular Weight	Calculated MW: 39 kDa; Observed MW: 39 kDa

Product Name: Phospho-ATF4 (Ser219) Rabbit Polyclonal Antibody
Catalog #: APRab00926

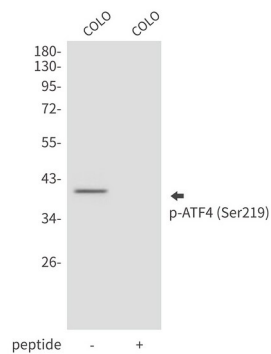
Background

ATF4, an activating transcription factor/cAMP-response element-binding protein family member, functions in the PERK and eIF2 α ER stress responsive pathway. ER stress represses the translation of the majority of mRNAs, but selectively stimulates the translation of certain mRNAs including that of ATF-4. Induced expression of ATF-4 increases the expression of genes critical for the recovery from ER stress.

Research Area

Epigenetics and Nuclear Signaling

Image Data



Western blot analysis of Phospho-ATF4 (Ser219) in COLO lysates using Phospho-ATF4 (Ser219) antibody.

Note

For research use only.