

Product Name: Phospho-CREB (Ser142) Rabbit Polyclonal Antibody
Catalog #: APRab00922

Summary

Production Name	Phospho-CREB (Ser142) Rabbit Polyclonal Antibody
Description	Primary antibody
Host	Rabbit
Application	WB,IHC-P
Reactivity	Human,Mouse,Rat

Performance

Conjugation	Unconjugated
Modification	Phosphorylated
Isotype	IgG
Clonality	Polyclonal Antibody
Form	Liquid
Storage	Store at 4°C short term. Aliquot and store at -20°C long term. Avoid freeze/thaw cycles.
Buffer	Liquid in PBS containing 50% glycerol, 0.5% BSA and 0.02% sodium azide, pH 7.3.
Purification	Affinity Purified

Immunogen

Gene Name	CREB1
Alternative Names	CREB1; Cyclic AMP-responsive element-binding protein 1; CREB-1; cAMP-responsive element-binding protein 1
Gene ID	1385
SwissProt ID	P16220

Application

Dilution Ratio	WB: 1/500-1/1000 IHC: 1/50-1/100
Molecular Weight	Calculated MW: 35 kDa; Observed MW: 37,43 kDa

Product Name: Phospho-CREB (Ser142) Rabbit Polyclonal Antibody
Catalog #: APRab00922

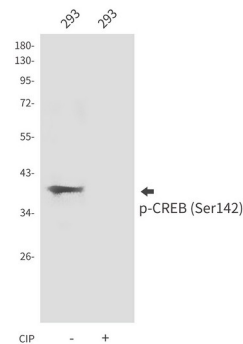
Background

This gene encodes a transcription factor that is a member of the leucine zipper family of DNA binding proteins. This protein binds as a homodimer to the cAMP-responsive element, an octameric palindrome.

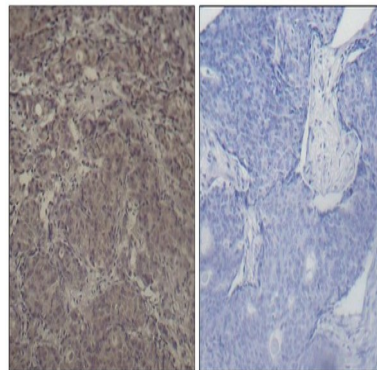
Research Area

Epigenetics and Nuclear Signaling

Image Data



Western blot analysis of Phospho-CREB (Ser142) in 293 lysates using Phospho-CREB (Ser142) antibody.



Immunohistochemistry analysis of paraffin-embedded Human breast carcinoma tissue using CREB (Phospho-Ser142) antibody. High-pressure and temperature Sodium Citrate pH 6.0 was used for antigen retrieval. Sample with blocking peptide on the right.

Note

For research use only.