

Product Name: Phospho-Connexin 43 (Ser368) Rabbit Polyclonal Antibody
Catalog #: APRab00920



Summary

Production Name	Phospho-Connexin 43 (Ser368) Rabbit Polyclonal Antibody
Description	Primary antibody
Host	Rabbit
Application	WB,IHC-P
Reactivity	Human,Mouse,Rat

Performance

Conjugation	Unconjugated
Modification	Phosphorylated
Isotype	IgG
Clonality	Polyclonal Antibody
Form	Liquid
Storage	Store at 4°C short term. Aliquot and store at -20°C long term. Avoid freeze/thaw cycles.
Buffer	Liquid in PBS containing 50% glycerol, 0.5% BSA and 0.02% sodium azide, pH 7.3.
Purification	Affinity Purified

Immunogen

Gene Name	GJA1
Alternative Names	Connexin 43; Connexin-43; Cx 43; Cx43; CXA1_HUMAN; DFNB38; Gap junction 43 kDa heart protein; Gap junction alpha-1 protein; Gap junction protein alpha 1 43kDa (connexin 43); Gap junction protein alpha 1 43kDa; Gap junction protein alpha like; GJA1; Gja1; GJAL; ODD; ODDD; ODOD; SDTY3.
Gene ID	2697
SwissProt ID	P17302

Application

Dilution Ratio	WB: 1/500-1/1000 IHC: 1/50-1/100
Molecular Weight	Calculated MW: 43 kDa; Observed MW: 43 kDa

Product Name: Phospho-Connexin 43 (Ser368) Rabbit Polyclonal Antibody
Catalog #: APRab00920



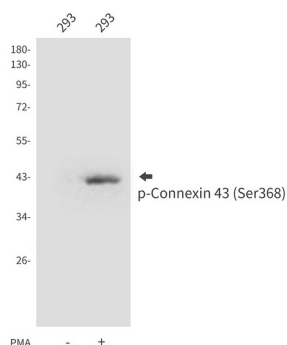
Background

Gap junction protein that acts as a regulator of bladder capacity.

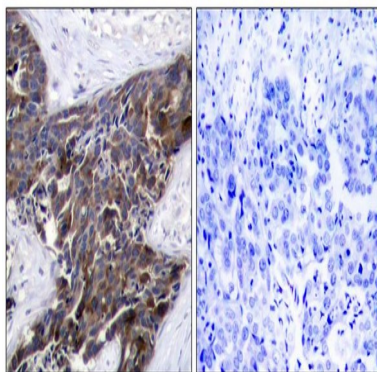
Research Area

Signal Transduction

Image Data



Western blot analysis of Phospho-Connexin 43 (Ser368) in 293 lysates using Phospho-Connexin 43 (Ser368) antibody.



Immunohistochemistry analysis of paraffin-embedded Human breast carcinoma tissue using Connexin 43 (Phospho-Ser368) antibody. High-pressure and temperature Sodium Citrate pH 6.0 was used for antigen retrieval. Sample with blocking peptide on the right.

Note

For research use only.