

**Product Name: Phospho-Stathmin 1 (Ser25) Rabbit
Polyclonal Antibody
Catalog #: APRab00919**

Summary

Production Name	Phospho-Stathmin 1 (Ser25) Rabbit Polyclonal Antibody
Description	Primary antibody
Host	Rabbit
Application	WB,IHC-P
Reactivity	Human,Mouse,Rat

Performance

Conjugation	Unconjugated
Modification	Phosphorylated
Isotype	IgG
Clonality	Polyclonal Antibody
Form	Liquid
Storage	Store at 4°C short term. Aliquot and store at -20°C long term. Avoid freeze/thaw cycles.
Buffer	Liquid in PBS containing 50% glycerol, 0.5% BSA and 0.02% sodium azide, pH 7.3.
Purification	Affinity Purified

Immunogen

Gene Name	STMN1 STMN1; C1orf215; LAP18; OP18; Stathmin; Leukemia-associated phosphoprotein p18;
Alternative Names	Metablastin; Oncoprotein 18; Op18; Phosphoprotein p19; pp19; ProsoLin; Protein Pr22; pp17
Gene ID	3925
SwissProt ID	P16949

Application

Dilution Ratio	WB: 1/500-1/1000 IHC: 1/50-1/100
Molecular Weight	Calculated MW: 17 kDa; Observed MW: 17 kDa

Product Name: Phospho-Stathmin 1 (Ser25) Rabbit Polyclonal Antibody
Catalog #: APRab00919

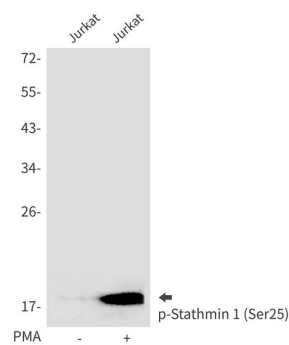
Background

Involved in the regulation of the microtubule (MT) filament system by destabilizing microtubules. Prevents assembly and promotes disassembly of microtubules. Phosphorylation at Ser-16 may be required for axon formation during neurogenesis. Involved in the control of the learned and innate fear.

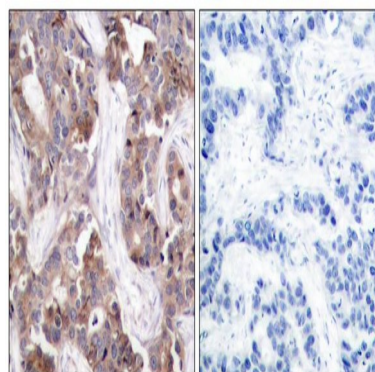
Research Area

Neuroscience

Image Data



Western blot analysis of Phospho-Stathmin 1 (Ser25) in Jurkat lysates using Phospho-Stathmin 1 (Ser25) antibody.



Immunohistochemistry analysis of paraffin-embedded Human breast carcinoma tissue using Stathmin 1(Phospho-Ser25) antibody. High-pressure and temperature Sodium Citrate pH 6.0 was used for antigen retrieval. Sample with blocking peptide on the right.

Note

For research use only.