

**Product Name: Phospho-alpha Synuclein (Ser129)
Rabbit Polyclonal Antibody
Catalog #: APRab00915**

Summary

Production Name	Phospho-alpha Synuclein (Ser129) Rabbit Polyclonal Antibody
Description	Primary antibody
Host	Rabbit
Application	WB,IHC-P
Reactivity	Human,Mouse,Rat

Performance

Conjugation	Unconjugated
Modification	Phosphorylated
Isotype	IgG
Clonality	Polyclonal Antibody
Form	Liquid
Storage	Store at 4°C short term. Aliquot and store at -20°C long term. Avoid freeze/thaw cycles.
Buffer	Liquid in PBS containing 50% glycerol, 0.5% BSA and 0.02% sodium azide, pH 7.3.
Purification	Affinity Purified

Immunogen

Gene Name	SNCA
Alternative Names	SNCA; NACP; PARK1; Alpha-synuclein; Non-A beta component of AD amyloid; Non-A4 component of amyloid precursor; NACP
Gene ID	6622
SwissProt ID	P37840

Application

Dilution Ratio	WB: 1/500-1/1000 IHC: 1/50-1/100
Molecular Weight	Calculated MW: 14 kDa; Observed MW: 18 kDa

**Product Name: Phospho-alpha Synuclein (Ser129)
Rabbit Polyclonal Antibody
Catalog #: APRab00915**

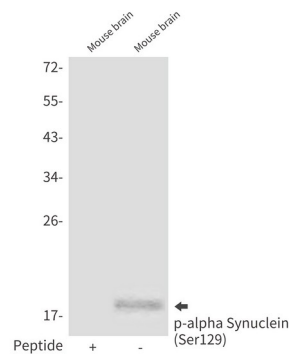
Background

May be involved in the regulation of dopamine release and transport. Induces fibrillization of microtubule-associated protein tau. Reduces neuronal responsiveness to various apoptotic stimuli, leading to a decreased caspase-3 activation. Genetic alterations of SNCA resulting in aberrant polymerization into fibrils, are associated with several neurodegenerative diseases (synucleinopathies).

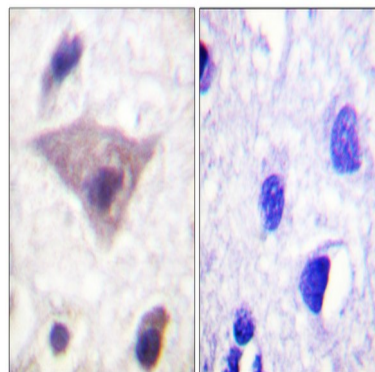
Research Area

Neuroscience

Image Data



Western blot analysis of Phospho-alpha Synuclein (Ser129) in mouse brain lysates using Phospho-alpha Synuclein (Ser129) antibody.



Immunohistochemistry analysis of paraffin-embedded Human brain using Synuclein (Phospho-Ser129) antibody. High-pressure and temperature Sodium Citrate pH 6.0 was used for antigen retrieval. Sample with blocking peptide on the right.

Note

For research use only.