

**Product Name: Phospho-STAT6 (Tyr641) Rabbit
Polyclonal Antibody
Catalog #: APRab00913**

Summary

Production Name	Phospho-STAT6 (Tyr641) Rabbit Polyclonal Antibody
Description	Primary antibody
Host	Rabbit
Application	WB,IHC-P
Reactivity	Human,Mouse,Rat

Performance

Conjugation	Unconjugated
Modification	Phosphorylated
Isotype	IgG
Clonality	Polyclonal Antibody
Form	Liquid
Storage	Store at 4°C short term. Aliquot and store at -20°C long term. Avoid freeze/thaw cycles.
Buffer	Liquid in PBS containing 50% glycerol, 0.5% BSA and 0.02% sodium azide, pH 7.3.
Purification	Affinity Purified

Immunogen

Gene Name	STAT6
Alternative Names	STAT6; Signal transducer and activator of transcription 6; IL-4 Stat
Gene ID	6778
SwissProt ID	P42226

Application

Dilution Ratio	WB: 1/500-1/1000 IHC: 1/50-1/100
Molecular Weight	Calculated MW: 94 kDa; Observed MW: 110 kDa

Background

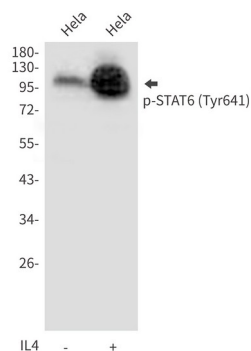
Product Name: Phospho-STAT6 (Tyr641) Rabbit Polyclonal Antibody
Catalog #: APRab00913

STAT6 transcription factor of the STAT family. Plays a central role in IL4-mediated biological responses. Induces the expression of BCL2L1/BCL-X(L), which is responsible for the anti-apoptotic activity of IL4.

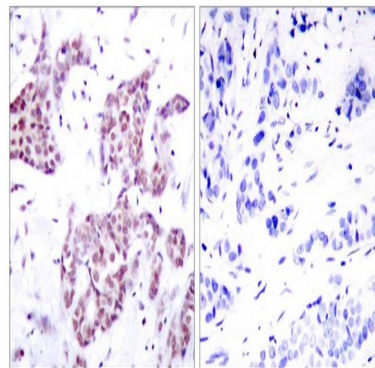
Research Area

Signal Transduction

Image Data



Western blot analysis of Phospho-STAT6 (Tyr641) in HeLa lysates using Phospho-STAT6 (Tyr641) antibody.



Immunohistochemistry analysis of paraffin-embedded Human breast carcinoma tissue using STAT6(Phospho-Tyr641) antibody. High-pressure and temperature Sodium Citrate pH 6.0 was used for antigen retrieval. Sample with blocking peptide on the right.

Note

For research use only.