

**Product Name: Human kappa Light Chain Rabbit Polyclonal Antibody**  
**Catalog #: APRab00904**

---

## Summary

<b>Production Name</b>	Human kappa Light Chain Rabbit Polyclonal Antibody
<b>Description</b>	Primary antibody
<b>Host</b>	Rabbit
<b>Application</b>	WB,ELISA
<b>Reactivity</b>	Human

## Performance

<b>Conjugation</b>	Unconjugated
<b>Modification</b>	Unmodified
<b>Isotype</b>	IgG
<b>Clonality</b>	Polyclonal Antibody
<b>Form</b>	Liquid
<b>Storage</b>	Store at 4°C short term. Aliquot and store at -20°C long term. Avoid freeze/thaw cycles.
<b>Buffer</b>	Liquid in PBS containing 50% glycerol, 0.5% BSA and 0.02% sodium azide, pH 7.3.
<b>Purification</b>	Affinity Purified

## Immunogen

<b>Gene Name</b>	IGKC
<b>Alternative Names</b>	HCAK1; Ig kappa chain C region; IGKC; IMMUNOGLOBULIN InV; Km
<b>Gene ID</b>	3514.0
<b>SwissProt ID</b>	P01834

## Application

<b>Dilution Ratio</b>	WB: 1/500-1/1000 ELISA: 1/10000
<b>Molecular Weight</b>	Calculated MW: 12 kDa; Observed MW: 25 kDa

## Background

---

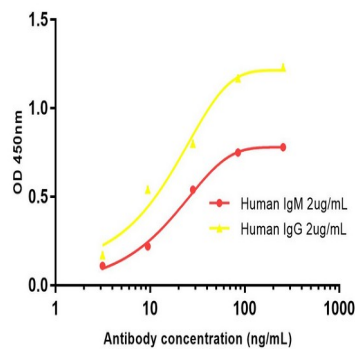
**Product Name: Human kappa Light Chain Rabbit Polyclonal Antibody**  
**Catalog #: APRab00904**

Constant region of immunoglobulin light chains. Immunoglobulins, also known as antibodies, are membrane-bound or secreted glycoproteins produced by B lymphocytes. In the recognition phase of humoral immunity, the membrane-bound immunoglobulins serve as receptors which, upon binding of a specific antigen, trigger the clonal expansion and differentiation of B lymphocytes into immunoglobulins-secreting plasma cells.

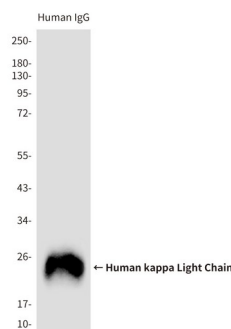
## Research Area

Immunology

## Image Data



Indirect ELISA assay for Rabbit Human kappa light chain antibody. Antigen coating concentration: 2ug/ml.



Western blot analysis of Human kappa Light Chain in total Human IgG reduced and denatured in 2X SDS loading buffer with DTT using Human kappa Light Chain antibody

## Note

For research use only.