

**Product Name: Phospho-KCNQ2/3/4/5
(Thr217/Thr246/Thr223/Thr251) Rabbit Polyclonal
Antibody
Catalog #: APRab00845**

Summary

Production Name	Phospho-KCNQ2/3/4/5 (Thr217/Thr246/Thr223/Thr251) Rabbit Polyclonal Antibody
Description	Primary antibody
Host	Rabbit
Application	IHC-P,ELISA
Reactivity	Human,Mouse,Rat

Performance

Conjugation	Unconjugated
Modification	Phosphorylated
Isotype	IgG
Clonality	Polyclonal Antibody
Form	Liquid
Storage	Store at 4°C short term. Aliquot and store at -20°C long term. Avoid freeze/thaw cycles.
Buffer	Liquid in PBS containing 50% glycerol, 0.5% BSA and 0.02% sodium azide, pH 7.3.
Purification	Affinity Chromatography

Immunogen

Gene Name	KCNQ2/KCNQ3/KCNQ4/KCNQ5 KCNQ2; Potassium voltage-gated channel subfamily KQT member 2; KQT-like 2; Neuroblastoma-specific potassium channel subunit alpha KvLQT2; Voltage-gated potassium channel subunit Kv7.2; KCNQ3; Potassium voltage-gated channel subfamily KQT me
Alternative Names	
Gene ID	3785/3786/9132/56479
SwissProt ID	O43526/O43525/P56696/Q9NR82

Application

Dilution Ratio	IHC: 1/50-1/100 ELISA: 1/10000
-----------------------	--------------------------------

**Product Name: Phospho-KCNQ2/3/4/5
(Thr217/Thr246/Thr223/Thr251) Rabbit Polyclonal
Antibody
Catalog #: APRab00845**

Molecular Weight -

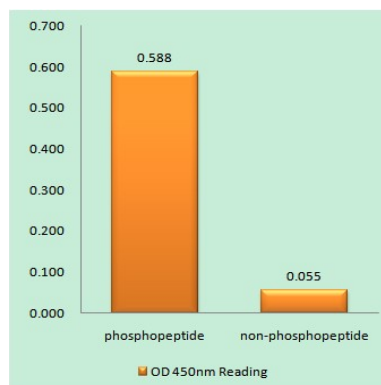
Background

The M channel is a slowly activating and deactivating potassium channel that plays a critical role in the regulation of neuronal excitability. The M channel is formed by the association of the protein encoded by this gene and a related protein encoded by the KCNQ3 gene, both integral membrane proteins. M channel currents are inhibited by M1 muscarinic acetylcholine receptors and activated by retigabine, a novel anti-convulsant drug. Defects in KCNQ2 are a cause of benign familial neonatal convulsions type 1 (BFNC), also known as epilepsy, benign neonatal type 1 (EBN1). At least five transcript variants encoding five different isoforms have been found for this gene.

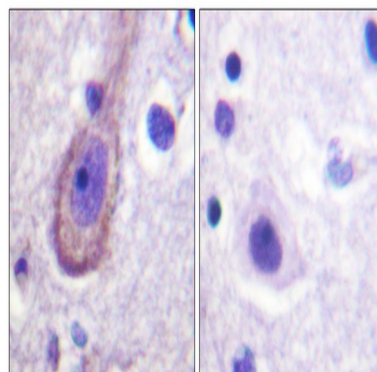
Research Area

Neuroscience

Image Data



EnzymeLinked Immunosorbent Assay (Phospho-ELISA) for Immunogen Phospho-peptide (Phospho-left) and NonPhospho-peptide (Phospho-right), using Kv7.3/KCNQ3 (Phospho-Thr24antibody



Immunohistochemical analysis of paraffin-embedded Human tonsils using Phospho-KCNQ2/3/4/5



**Product Name: Phospho-KCNQ2/3/4/5
(Thr217/Thr246/Thr223/Thr251) Rabbit Polyclonal
Antibody
Catalog #: APRab00845**

(Thr217/Thr246/Thr223/Thr251) antibody. Sample with blocking peptide on the right. High-pressure and temperature Sodium Citrate pH 6.0 was used for antigen retrieval.

Note

For research use only.