

**Product Name: Phospho-alpha 1 Sodium Potassium
ATPase (Ser23) Rabbit Polyclonal Antibody
Catalog #: APRab00835**



Summary

Production Name	Phospho-alpha 1 Sodium Potassium ATPase (Ser23) Rabbit Polyclonal Antibody
Description	Primary antibody
Host	Rabbit
Application	WB,ICC/IF,ELISA
Reactivity	Rat

Performance

Conjugation	Unconjugated
Modification	Phosphorylated
Isotype	IgG
Clonality	Polyclonal Antibody
Form	Liquid
Storage	Store at 4°C short term. Aliquot and store at -20°C long term. Avoid freeze/thaw cycles.
Buffer	Liquid in PBS containing 50% glycerol, 0.5% BSA and 0.02% sodium azide, pH 7.3.
Purification	Affinity Chromatography

Immunogen

Gene Name	Atp1A1
Alternative Names	ATP1A1; Sodium/potassium-transporting ATPase subunit alpha-1; Na(+)/K(+) ATPase alpha-1 subunit; Sodium pump subunit alpha-1
Gene ID	24211.0
SwissProt ID	P06685

Application

Dilution Ratio	WB: 1/500-1/1000 IF: 1/50-1/200 ELISA: 1/10000
Molecular Weight	Calculated MW: 113 kDa; Observed MW: 113 kDa

Product Name: Phospho-alpha 1 Sodium Potassium ATPase (Ser23) Rabbit Polyclonal Antibody
Catalog #: APRab00835



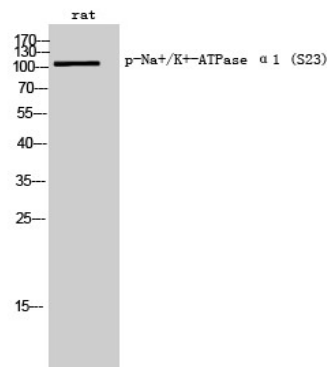
Background

The ATPase Na⁺/K⁺ transporting subunit alpha 1 encoded by ATP1A1 belongs to the family of P-type cation transport ATPases, and to the subfamily of Na⁺/K⁺ -ATPases. Na⁺/K⁺ -ATPase is an integral membrane protein responsible for establishing and maintaining the electrochemical gradients of Na and K ions across the plasma membrane.

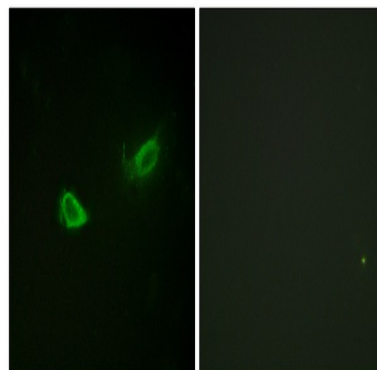
Research Area

Tags & Cell Markers

Image Data

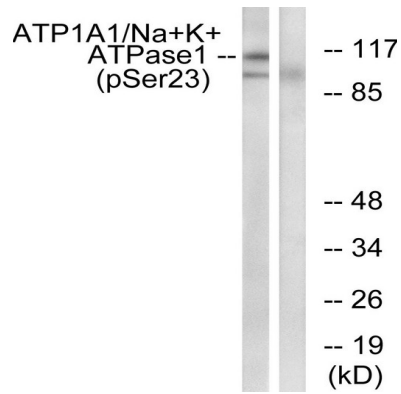


Western blot analysis of Phospho-alpha 1 Sodium Potassium ATPase (Ser23) in rat lysates using Phospho-alpha 1 Sodium Potassium ATPase (Ser23) antibody.



Immunofluorescence analysis of Phospho-alpha 1 Sodium Potassium ATPase (Ser23) in NIH/3T3 using ATP1 alpha1/Na⁺K⁺ ATPase1 (Phospho-Ser23) antibody. The picture on the right is blocked using the Phospho-peptide.

**Product Name: Phospho-alpha 1 Sodium Potassium
ATPase (Ser23) Rabbit Polyclonal Antibody
Catalog #: APRab00835**



Western blot analysis of Phospho-alpha 1 Sodium Potassium ATPase (Ser23) in rat brain lysates using ATP1 alpha1/Na+K+ ATPase1 (Phospho-Ser23) antibody. The lane on the right is blocked with the Phospho- peptide.

Note

For research use only.