

**Product Name: Phospho-ErbB 2 (Tyr1221/Tyr1222)  
Rabbit Polyclonal Antibody  
Catalog #: APRab00832**

---

## Summary

<b>Production Name</b>	Phospho-ErbB 2 (Tyr1221/Tyr1222) Rabbit Polyclonal Antibody
<b>Description</b>	Primary antibody
<b>Host</b>	Rabbit
<b>Application</b>	WB,IHC-P,IP,ELISA
<b>Reactivity</b>	Human,Mouse,Rat

## Performance

<b>Conjugation</b>	Unconjugated
<b>Modification</b>	Phosphorylated
<b>Isotype</b>	IgG
<b>Clonality</b>	Polyclonal Antibody
<b>Form</b>	Liquid
<b>Storage</b>	Store at 4°C short term. Aliquot and store at -20°C long term. Avoid freeze/thaw cycles.
<b>Buffer</b>	Liquid in PBS containing 50% glycerol, 0.5% BSA and 0.02% sodium azide, pH 7.3.
<b>Purification</b>	Affinity Chromatography

## Immunogen

<b>Gene Name</b>	ERBB2 ERBB2; HER2; MLN19; NEU; NGL; Receptor tyrosine-protein kinase erbB-2; Metastatic
<b>Alternative Names</b>	lymph node gene 19 protein; MLN 19; Proto-oncogene Neu; Proto-oncogene c-ErbB-2; Tyrosine kinase-type cell surface receptor HER2; p185erbB2; CD antigen CD340
<b>Gene ID</b>	2064
<b>SwissProt ID</b>	P04626

## Application

<b>Dilution Ratio</b>	WB: 1/500-1/1000 IHC: 1/50-1/100 IP: 1/20 ELISA: 1/10000
<b>Molecular Weight</b>	Calculated MW: 138 kDa; Observed MW: 180 kDa

**Product Name: Phospho-ErbB 2 (Tyr1221/Tyr1222)**  
**Rabbit Polyclonal Antibody**  
**Catalog #: APRab00832**

---

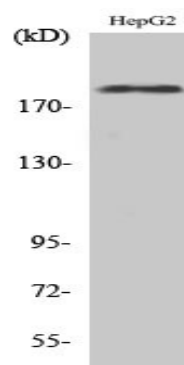
## Background

This gene encodes a member of the epidermal growth factor (EGF) receptor family of receptor tyrosine kinases. This protein has no ligand binding domain of its own and therefore cannot bind growth factors. However, it does bind tightly to other ligand-bound EGF receptor family members to form a heterodimer, stabilizing ligand binding and enhancing kinase-mediated activation of downstream signalling pathways, such as those involving mitogen-activated protein kinase and phosphatidylinositol-3 kinase.

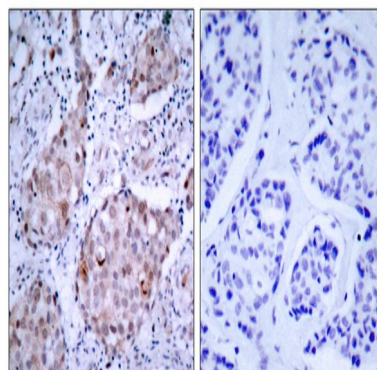
## Research Area

Cancer

## Image Data



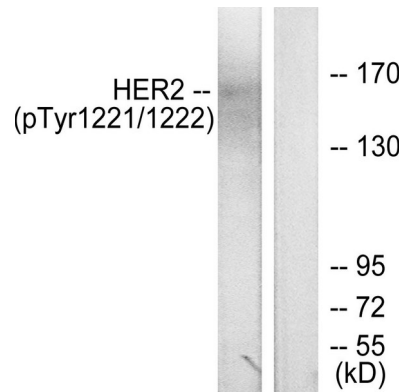
Western blot analysis of Phospho-ErbB 2 (Tyr1221/Tyr1222) in various lysates using Phospho-ErbB 2 (Tyr1221/Tyr1222) antibody.



Immunohistochemistry analysis of paraffin-embedded Human breast carcinoma, using HER2 (Phospho-Tyr1221/Tyr122, 2) antibody. High-pressure and temperature Sodium Citrate pH 6.0 was used for antigen retrieval. Sample with blocking peptide on the right.

**Product Name: Phospho-ErbB 2 (Tyr1221/Tyr1222)**  
**Rabbit Polyclonal Antibody**  
**Catalog #: APRab00832**

---



Western blot analysis of Phospho-ErbB 2 (Tyr1221/Tyr1222) in SKOV-3 lysates treated with EGF, using HER2 (Phospho-Tyr1221/Tyr122, 2) antibody. The lane on the right is blocked with the Phospho-peptide.

### **Note**

For research use only.