

Product Name: Phospho-Rb (Ser780) Rabbit Polyclonal Antibody
Catalog #: APRab00822



Summary

Production Name	Phospho-Rb (Ser780) Rabbit Polyclonal Antibody
Description	Primary antibody
Host	Rabbit
Application	WB,IHC-F,IHC-P,ICC/IF,ELISA
Reactivity	Human,Mouse,Rat

Performance

Conjugation	Unconjugated
Modification	Phosphorylated
Isotype	IgG
Clonality	Polyclonal Antibody
Form	Liquid
Storage	Store at 4°C short term. Aliquot and store at -20°C long term. Avoid freeze/thaw cycles.
Buffer	Liquid in PBS containing 50% glycerol, 0.5% BSA and 0.02% sodium azide, pH 7.3.
Purification	Affinity Chromatography

Immunogen

Gene Name	RB1
Alternative Names	RB1; Retinoblastoma-associated protein; p105-Rb; pRb; Rb; pp110
Gene ID	5925
SwissProt ID	P06400

Application

Dilution Ratio	WB: 1/500-1/1000 IHC: 1/50-1/100 IF: 1/50-1/200 ELISA: 1/10000
Molecular Weight	Calculated MW: 106 kDa; Observed MW: 106 kDa

Background

Product Name: Phospho-Rb (Ser780) Rabbit Polyclonal Antibody
Catalog #: APRab00822

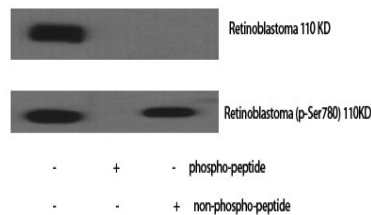


Cell cycle-dependent phosphorylation by a CDK inhibits Rb target binding and allows cell cycle progression. Rb inactivation and subsequent cell cycle progression likely requires an initial phosphorylation by cyclin D-CDK4/6 followed by cyclin E-CDK2 phosphorylation. Specificity of different CDK/cyclin complexes has been observed in vitro and cyclin D1 is required for Ser780 phosphorylation in vivo.

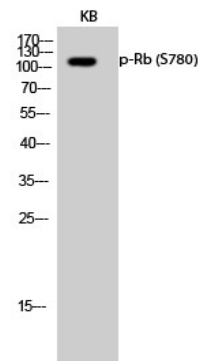
Research Area

Cell Biology

Image Data

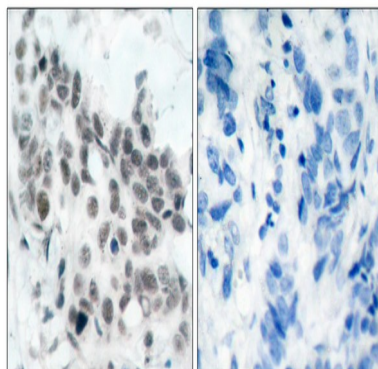


Western blot analysis of Phospho-Rb (Ser780) in various lysates using Phospho-Rb (S780) antibody.

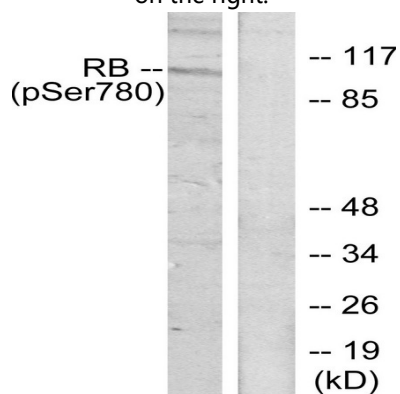


Western blot analysis of Phospho-Rb (Ser780) in KB lysates using Phospho-Rb (S780) antibody.

Product Name: Phospho-Rb (Ser780) Rabbit Polyclonal Antibody
Catalog #: APRab00822



Immunohistochemistry analysis of paraffin-embedded Human breast carcinoma using Retinoblastoma (Phospho-Ser78) antibody. High-pressure and temperature Sodium Citrate pH 6.0 was used for antigen retrieval. Sample with blocking peptide on the right.



Western blot analysis of Phospho-Rb (Ser780) in K562 lysates treated with serum 10% using Phospho-Rb (Ser780) antibody. The lane on the right is blocked with the Phospho- peptide.

Note

For research use only.