

**Product Name: Cleaved-Notch1 Rabbit Polyclonal Antibody**  
**Catalog #: APRab00818**

---

## Summary

<b>Production Name</b>	Cleaved-Notch1 Rabbit Polyclonal Antibody
<b>Description</b>	Primary antibody
<b>Host</b>	Rabbit
<b>Application</b>	WB,IHC-F,IHC-P,ICC/IF,ELISA
<b>Reactivity</b>	Human,Mouse,Rat

## Performance

<b>Conjugation</b>	Unconjugated
<b>Modification</b>	Cleaved
<b>Isotype</b>	IgG
<b>Clonality</b>	Polyclonal Antibody
<b>Form</b>	Liquid
<b>Storage</b>	Store at 4°C short term. Aliquot and store at -20°C long term. Avoid freeze/thaw cycles.
<b>Buffer</b>	Liquid in PBS containing 50% glycerol, 0.5% BSA and 0.02% sodium azide, pH 7.3.
<b>Purification</b>	Affinity Purified

## Immunogen

<b>Gene Name</b>	NOTCH1
<b>Alternative Names</b>	NOTCH1; TAN1; Neurogenic locus notch homolog protein 1; Notch 1; hN1; Translocation-associated notch protein TAN-1
<b>Gene ID</b>	4851
<b>SwissProt ID</b>	P46531

## Application

<b>Dilution Ratio</b>	WB: 1/500-1/1000 IHC: 1/50-1/100 IF: 1/50-1/200 ELISA: 1/10000
<b>Molecular Weight</b>	Calculated MW: 273 kDa; Observed MW: 110 kDa

**Product Name: Cleaved-Notch1 Rabbit Polyclonal Antibody**  
**Catalog #: APRab00818**

---

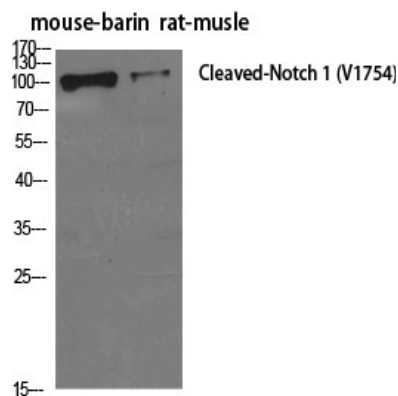
## Background

Functions as a receptor for membrane-bound ligands Jagged1, Jagged2 and Delta1 to regulate cell-fate determination. Upon ligand activation through the released notch intracellular domain (NICD) it forms a transcriptional activator complex with RBPJ/RBPSUH and activates genes of the enhancer of split locus. Affects the implementation of differentiation, proliferation and apoptotic programs. Involved in angiogenesis; negatively regulates endothelial cell proliferation and migration and angiogenic sprouting.

## Research Area

Neuroscience

## Image Data



Western blot analysis of Cleaved-Notch1 in various lysates using Cleaved-Notch1 antibody.

## Note

For research use only.