

Summary

Production Name	LATS1 Rabbit Polyclonal Antibody
Description	Primary antibody
Host	Rabbit
Application	WB,ELISA
Reactivity	Human,Mouse,Rat

Performance

Conjugation	Unconjugated
Modification	Unmodified
Isotype	IgG
Clonality	Polyclonal Antibody
Form	Liquid
Storage	Store at 4°C short term. Aliquot and store at -20°C long term. Avoid freeze/thaw cycles.
Buffer	Liquid in PBS containing 50% glycerol, 0.5% BSA and 0.02% sodium azide, pH 7.3.
Purification	Affinity Purified

Immunogen

Gene Name	LATS1
Alternative Names	Serine/threonine-protein kinase LATS1 (EC 2.7.11.1; Large tumor suppressor homolog 1; WARTS protein kinase; h-warts)
Gene ID	9113
SwissProt ID	O95835

Application

Dilution Ratio	WB: 1/500-1/1000 ELISA: 1/10000
Molecular Weight	Calculated MW: 127 kDa; Observed MW: 120 kDa

Background

Product Name: LATS1 Rabbit Polyclonal Antibody
Catalog #: APRab00811

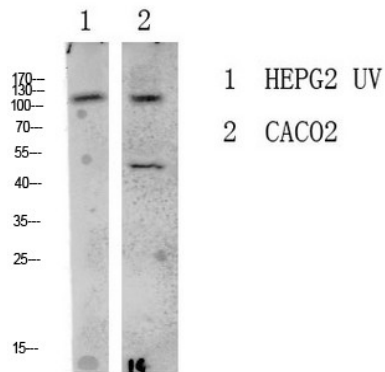


Negative regulator of YAP1 in the Hippo signaling pathway that plays a pivotal role in organ size control and tumor suppression by restricting proliferation and promoting apoptosis.

Research Area

Tags & Cell Markers

Image Data



Western blot analysis of LATS1 in various lysates using LATS1 antibody.

Note

For research use only.