

Product Name: MAP4K2/3 Rabbit Polyclonal Antibody
Catalog #: APRab00806



Summary

Production Name	MAP4K2/3 Rabbit Polyclonal Antibody
Description	Primary antibody
Host	Rabbit
Application	WB,ELISA
Reactivity	Human,Rat

Performance

Conjugation	Unconjugated
Modification	Unmodified
Isotype	IgG
Clonality	Polyclonal Antibody
Form	Liquid
Storage	Store at 4°C short term. Aliquot and store at -20°C long term. Avoid freeze/thaw cycles.
Buffer	Liquid in PBS containing 50% glycerol, 0.5% BSA and 0.02% sodium azide, pH 7.3.
Purification	Affinity Purified

Immunogen

Gene Name	MAP4K2/MAP4K3 Mitogen-activated protein kinase kinase kinase kinase 2; B lymphocyte serine/threonine-protein kinase; Germinal center kinase; GC kinase; MAPK/ERK kinase
Alternative Names	kinase kinase 2; MEK kinase kinase 2; MEKKK 2; Rab8-interacting protein; Mitogen-activated protein kinase kinase kinase kinase 3; Germinal center kinase-related protein kinase; GLK; MAPK/ERK kinase kinase kinase 3; MEK kinase kinase 3; MEKKK 3
Gene ID	5871/8491
SwissProt ID	Q12851/Q8IVH8

Application

Dilution Ratio	WB: 1/500-1/1000 ELISA: 1/10000
Molecular Weight	Calculated MW: 92 kDa; Observed MW: 100 kDa

Product Name: MAP4K2/3 Rabbit Polyclonal Antibody
Catalog #: APRab00806



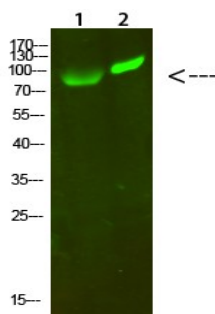
Background

Serine/threonine-protein kinase which acts as an essential component of the MAP kinase signal transduction pathway. Acts as a MAPK kinase kinase (MAP4K) and is an upstream activator of the stress-activated protein kinase/c-Jun N-terminal kinase (SAP/JNK) signaling pathway and to a lesser extent of the p38 MAPKs signaling pathway.

Research Area

Signal Transduction

Image Data



Western blot analysis of MAP4K2/3 in 293T, hela lysates using MAP4K2/3 antibody.

Note

For research use only.