

Product Name: Integrin beta 7 Rabbit Polyclonal Antibody
Catalog #: APRab00802

Summary

Production Name	Integrin beta 7 Rabbit Polyclonal Antibody
Description	Primary antibody
Host	Rabbit
Application	WB,ELISA
Reactivity	Human,Mouse

Performance

Conjugation	Unconjugated
Modification	Unmodified
Isotype	IgG
Clonality	Polyclonal Antibody
Form	Liquid
Storage	Store at 4°C short term. Aliquot and store at -20°C long term. Avoid freeze/thaw cycles.
Buffer	Liquid in PBS containing 50% glycerol, 0.5% BSA and 0.02% sodium azide, pH 7.3.
Purification	Affinity Purified

Immunogen

Gene Name	ITGB7
Alternative Names	Integrin beta-7 (Gut homing receptor beta subunit)
Gene ID	3695
SwissProt ID	P26010

Application

Dilution Ratio	WB: 1/500-1/1000 ELISA: 1/10000
Molecular Weight	Calculated MW: 87 kDa; Observed MW: 130 kDa

Background

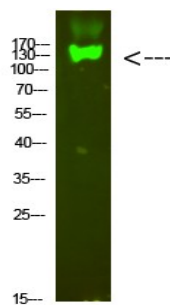
Product Name: Integrin beta 7 Rabbit Polyclonal Antibody
Catalog #: APRab00802

Integrin alpha-4/beta-7 (Peyer patches-specific homing receptor LPAM-1) is an adhesion molecule that mediates lymphocyte migration and homing to gut-associated lymphoid tissue (GALT).

Research Area

Signal Transduction

Image Data



Western blot analysis of Integrin beta 7 in mouse heart lysates using Integrin beta 7 antibody.

Note

For research use only.