

**Product Name: KCTD7 Rabbit Polyclonal Antibody**  
**Catalog #: APRab00800**



## Summary

<b>Production Name</b>	KCTD7 Rabbit Polyclonal Antibody
<b>Description</b>	Primary antibody
<b>Host</b>	Rabbit
<b>Application</b>	WB,ELISA
<b>Reactivity</b>	Human,Mouse,Rat

## Performance

<b>Conjugation</b>	Unconjugated
<b>Modification</b>	Unmodified
<b>Isotype</b>	IgG
<b>Clonality</b>	Polyclonal Antibody
<b>Form</b>	Liquid
<b>Storage</b>	Store at 4°C short term. Aliquot and store at -20°C long term. Avoid freeze/thaw cycles.
<b>Buffer</b>	Liquid in PBS containing 50% glycerol, 0.5% BSA and 0.02% sodium azide, pH 7.3.
<b>Purification</b>	Affinity Purified

## Immunogen

<b>Gene Name</b>	KCTD7
<b>Alternative Names</b>	BTB/POZ domain-containing protein KCTD7
<b>Gene ID</b>	154881
<b>SwissProt ID</b>	Q96MP8

## Application

<b>Dilution Ratio</b>	WB: 1/500-1/1000 ELISA: 1/10000
<b>Molecular Weight</b>	Calculated MW: 33 kDa; Observed MW: 33 kDa

## Background

May be involved in the control of excitability of cortical neurons.

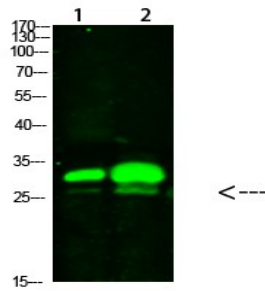
**Product Name: KCTD7 Rabbit Polyclonal Antibody**  
**Catalog #: APRab00800**



## Research Area

-

## Image Data



Western blot analysis of KCTD7 in mouse brain , mouse spleen lysates using KCTD7 antibody.

## Note

For research use only.